



Empowering Tomorrow's AI Computing

COMe Module

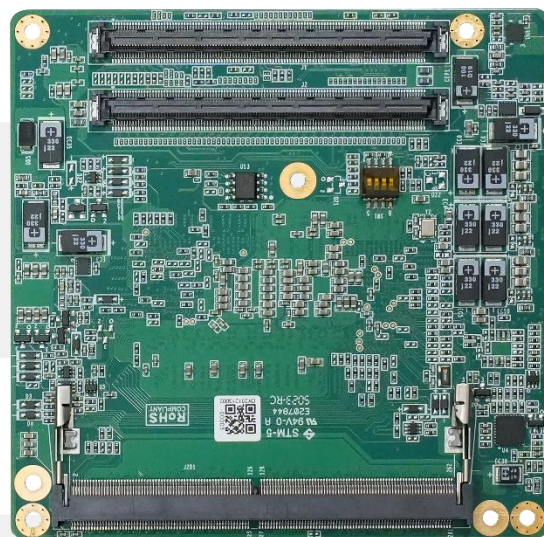
Catalogue

Contents

Type 6 12/13th Alder Lake/Raptor Lake Series	2
Type 6 11th Tiger Lake Series.....	3
Type 6 11th Elkhart Lake Series.....	6
Type 6 7th Kaby Lake Series.....	7
Type 6 6th Skylake Series	8
Type 7 5th Boardwell Series.....	11

Type 6 12/13th Alder Lake/Raptor Lake Series

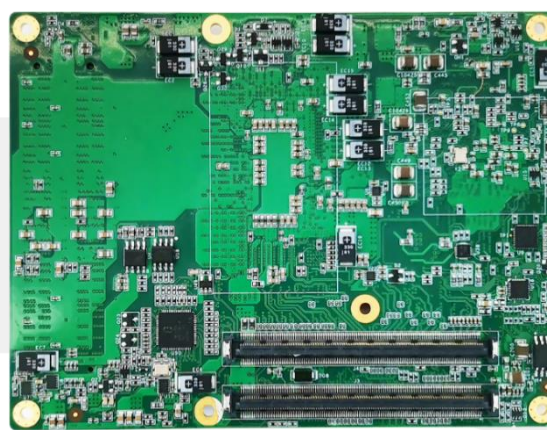
Intel 12/13th Alder Lake/Raptor Lake COM-Express Type 6 95*95mm



Model		ECM-6121				
COMe		2 x COM-E 220Pin				
CPU	CPU	Intel 12/13th Alder Lake /Raptor Lake				
		7305E	i5-1250PE	i5-1350PE	i7-1360P	i3-1315U
	Core Number	5C	12C	12C	12C	6C
	Total Threads	5T	16T	16T	16T	8T
	Max. Speed	1.0GHz	4.4 GHz	4.6 GHz	5.0 GHz	4.5GHz
	L3 Cache	8M	12M	12M	18M	10M
	TDP (W)	15W	28W	28W	28W	15W
Memory		2 x SO-DIMM Max 64G DDR5				
Storage		2 x SATA3.0				
PCI Express		PEG: PCIe Gen4, 12 lanes (H series), Bitfurcate to 1 x8 PEG: PCIe Gen4, 4 lanes (P/U series), Bitfurcate to 1 x4 PCIe: PCIe Gen3, 8 lanes max up to 6 end devices, Default 5 lanes (5 x1, 2 x2 + 1 x1), Option 2 x4, 1 x4 + 2 x2 (Co-lay with SATA & Ethernet)				
Display		LVDS Dual Chanel(Optional eDP) 3 x DDI configurable HDMI/DisplayPort				
USB		2 x USB3.2 8 x USB2.0				
Ethernet		Intel®I225-AT				
GPIO		1 x 8-bits GPIO				
LPC		1 x LPC				
SMBUS		1 x SMBUS				
Power Supply		ATX: VCC、VSB AT: VCC				
Input Voltage		Vin: 8.5V~20V(±5%) VSB: 5±5% RTC Battery: 2.0V~3.3V				
Dimension		95*95mm				

Type 6 11th Tiger Lake Series

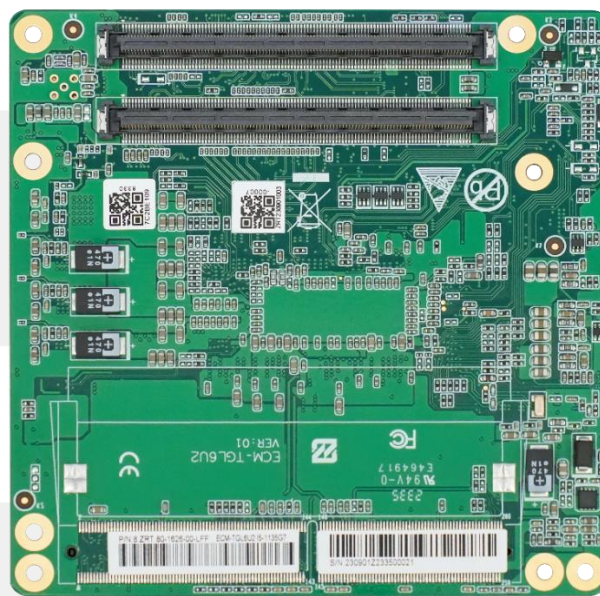
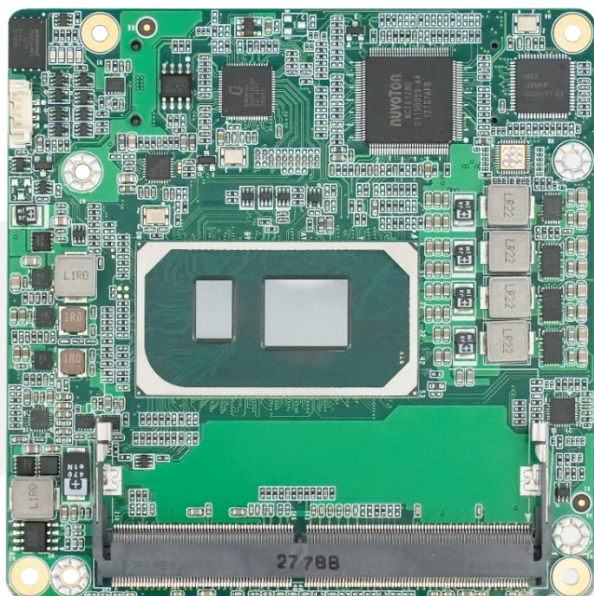
Intel 11th Tiger Lake-HE COM-Express Type 6 95*125mm



Model		ECM-6103		
COMe		2 x COM-E 220Pin		
CPU	CPU	Intel Tiger Lake-HE i3/i5/i7		
		i7-11850HE	i5-11500HE	i3-11100HE
	Core Number	8C	6C	4C
	Total Threads	16T	12T	8T
	Max. Speed	4.7GHz	4.5GHz	4.4GHz
	L3 Cache	24M	12M	8M
	TDP (W)	45W	45W	45W
Chipset		Intel PCH QM580E		
Memory		2 x SO-DIMM Max 128G DDR4		
Storage		4 x SATA3.0		
PCI Express x16		1 PCIe x16 4.0 (Option 1x PCIe x16、 2 x PCIe x8、 1 x PCIe x8 + 2 x PCIe x4)		
PCI Express x1		8 x PCIe x1 3.0(Option PCIe x4 or x2)		
Display		3 x DDI(Option HDMI/DVI/DP) 1 x VGA 1 x LVDS(Option eDP)		
USB		4 x USB3.2 8 x USB2.0		
Ethernet		Intel®I225-AT		
GPIO		1 x 8-bits GPIO		
LPC		1 x LPC		
SMBUS		1 x SMBUS		
Power Supply		ATX: VCC、 VSB AT: VCC		
Input Voltage		Vin: 8.5V ~ 20V VSB: 4.75V ~ 5.25 V RTC Battery: 2.0V ~ 3.3V		
Windows		Windows 10 LTSC/1809(RS5)		
Linux		Red Hat 8.4、 Ubuntu 20.04、 Yocto 4.0xLTS		
Dimension		95*125mm		

Type 6 11th Tiger Lake Series

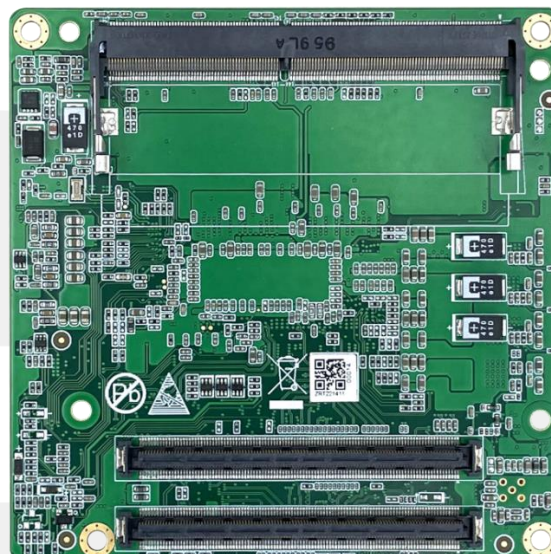
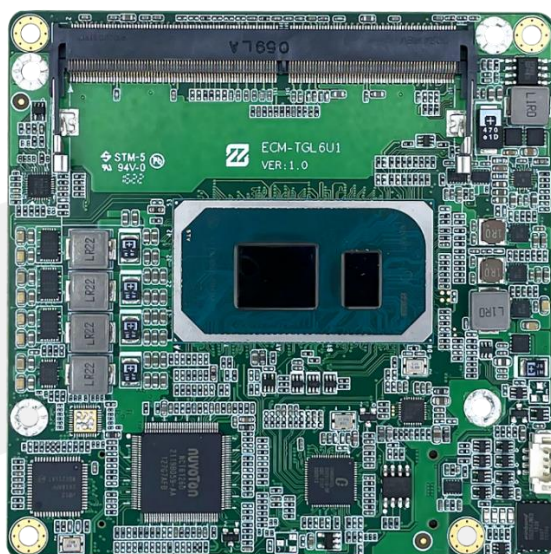
Intel 11th Tiger Lake-U COM-Express Type 6 95*95mm



Model		ECM-TGL6U2
COMe		2 x COM-E 220Pin
CPU	CPU	Intel Tiger Lake-U i3/i5/i7 i5-1135G7
	Core Number	4C
	Total Threads	8T
	Max. Speed	4.2GHz
	L3 Cache	8M
	TDP (W)	28W
Chipset		SOC
Memory		2 x SO-DIMM Max 64G DDR4
Storage		2 x SATA3.0
PCI Express x4		2 x PCIe x4
PCI Express x1		1 x PCIe x1
Display		2 x DDI(Option HDMI/DVI/DP) 1 x DDI to DP 1 x VGA 1 x eDP to LVDS(Option eDP)
USB		4 x USB3.0 8 x USB2.0
Ethernet		Intel®I211-AT
GPIO		1 x 8-bits GPIO
LPC		1 x LPC
Power Supply		ATX: VCC、VSB AT: VCC
Windows		Windows 10 LTSC/1809(RS5)
Linux		Red Hat 8.4、Ubuntu 20.04、Yocto 4.0xLTS
Dimension		95*95mm

Type 6 11th Tiger Lake Series

Intel 11th Tiger Lake-U COM-Express Type 6 95*95mm



Model		ECM-TGL6U1
COMe		2 x COM-E 220Pin
CPU	CPU	Intel Tiger Lake-U i3/i5/i7 i5-1135G7
	Core Number	4C
	Total Threads	8T
	Max. Speed	4.2GHz
	L3 Cache	8M
	TDP (W)	28W
Chipset		SOC
Memory		2 x SO-DIMM Max 64G DDR4
Storage		2 x SATA3.0
PCI Express x4		1 x PCIe x4 1 x PEG x4
PCI Express x1		3 x PCIe x1
Display		2 x DDI(Option HDMI/DVI/DP) 1 x DDI to DP 1 x VGA 1 x eDP to LVDS(Option eDP)
USB		2 x USB3.0 8 x USB2.0
Ethernet		Intel® I211-AT
GPIO		1 x 8-bits GPIO
LPC		1 x LPC
Power Supply		ATX: VCC、VSB AT: VCC
Windows		Windows 10 LTSC/1809(RS5)
Linux		Red Hat 8.4、Ubuntu 20.04、Yocto 4.0xLTS
Dimension		95*95mm

Type 6 11th Elkhart Lake Series

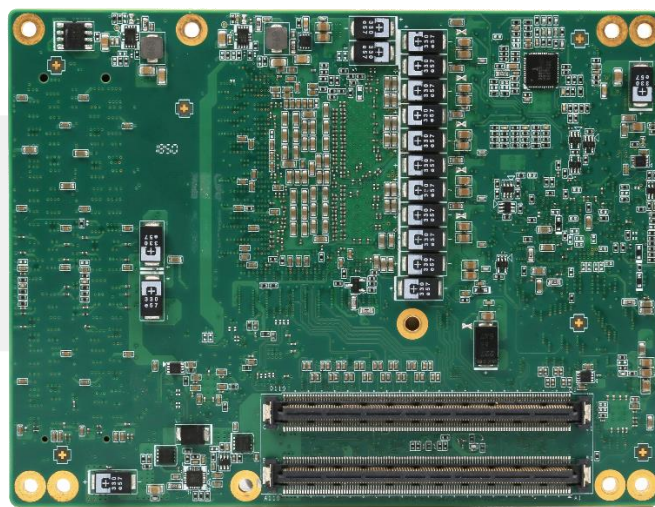
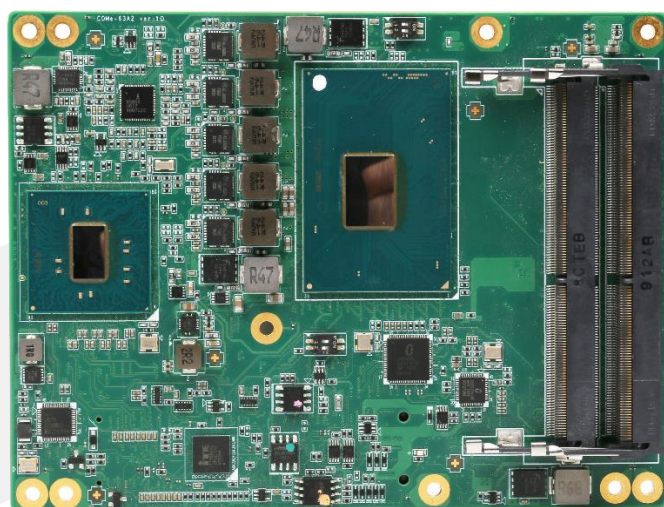
Intel 11th Elkhart Lake COM-Express Type 6 95*95mm



Model		ECM-6201	
COMe		2 x COM-E 220Pin	
CPU	CPU	Intel Elkhart Lake	
		J6426	J6413
	Core Number	4	4
	Max. Speed	2.0 GHz	1.8 GHz
	L3 Cache	1.5M	1.5M
	TDP (W)	10W	10W
Chipset		SOC	
Memory		2 x SO-DIMM Max 32G DDR4	
PCI Express x4		1 x PCIe 3.0 x4	
PCI Express x2		1 x PCIe 3.0 x1	
PCI Express x1		1 x PCIe 3.0 x1	
Display		2 x DDI(Option HDMI/DP) 1 x eDP to LVDS(Option eDP)	
USB		4 x USB3.0 8 x USB2.0	
Ethernet		Marvell 88E1512	
GPIO		Support	
LPC		1 x LPC	
SMBUS		1 x SMBUS	
Power Supply		ATX: VCC、 VSB AT: VCC	
Input Voltage		Vin: 8.5V ~ 20V VSB: 4.75V ~ 5.25 V RTC Battery: 2.4V ~ 3.3V	
Windows		Windows 10 LTSC/1809(RS5)	
Linux		Red Hat 8.6/9.0 Ubuntu 20.04 Yocto 4.0xLTS	
Dimension		95*95mm	

Type 6 7th Kaby Lake Series

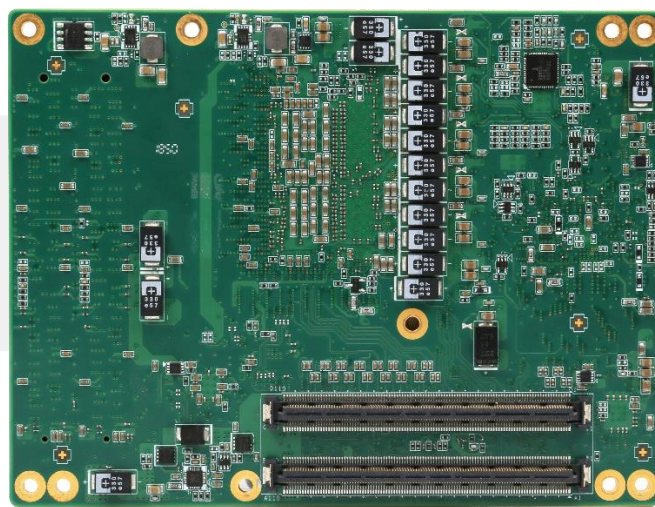
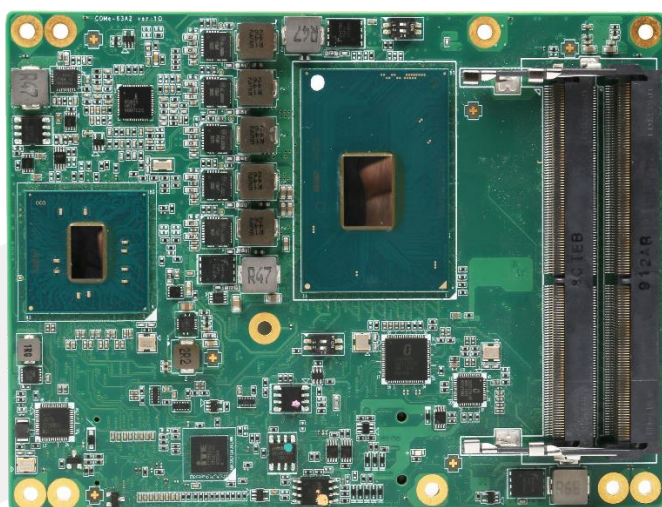
Intel 7th Kaby Lake-H COM-Express Type 6 95*125mm



Model		ECM-SKY6H1
COMe		2 x COM-E 220Pin
CPU	CPU	Intel Kaby Lake-H i3/i5/i7 i7-7700HQ
	Core Number	4C
	Total Threads	8T
	Max. Speed	3.8GHz
	L3 Cache	6M
	TDP (W)	45W
Chipset		Intel PCH CM236/QM170
Memory		2 x SO-DIMM Max 64G DDR4
Storage		4 x SATA3.0
PCI Express x16		1 x PCIe x16 (Option 2 x PCIe x8、 1 x PCIe x8 + 2 x PCIe x4)
PCI Express x1		8 x PCIe x1 (Option PCIe x4 or x2)
Display		1 x DDI(Option HDMI/DVI/DP) 1 x DDI to VGA(Option HDMI/DVI/DP) 1 x eDP to LVDS(Option DP)
USB		4 x USB3.0 8 x USB2.0
Ethernet		Intel®I219-AT
GPIO		1 x 8-bits GPIO
LPC		1 x LPC
SMBUS		1 x SMBUS
Power Supply		ATX: VCC、 VSB AT: VCC
Windows		Windows 10 1809(RS5)
Linux		Yocto 2.4 Rocko
Dimension		95*125mm

Type 6 6th Skylake Series

Intel 6th Skylake-H COM-Express Type 6 95*125mm



Model		ECM-SKY6H1			
COMe		2 x COM-E 220Pin			
CPU	CPU	Intel Skylake-H i3/i5/i7			
		I7-6822EQ	I7-6820EQ	I7-6820HQ	I3-6100E
	Core Number	4C	4C	4C	2C
	Total Threads	8T	8T	8T	4T
	Max. Speed	2.8GHz	3.5GHz	3.6GHz	2.7GHz
	L3 Cache	8M	8M	8M	3M
	TDP (W)	25W	45W	45W	35W
Chipset		Intel PCH CM236/QM170			
Memory		2 x SO-DIMM Max 64G DDR4			
Storage		4 x SATA3.0			
PCI Express x16		1 x PCIe x16 (Option 2 x PCIe x8、 1 x PCIe x8 + 2 x PCIe x4)			
PCI Express x1		8 x PCIe x1 (Option PCIe x4 or x2)			
Display		1 x DDI(Option HDMI/DVI/DP) 1 x DDI to VGA(Option HDMI/DVI/DP) 1 x eDP to LVDS(Option DP)			
USB		4 x USB3.0 8 x USB2.0			
Ethernet		Intel®I219-AT			
GPIO		1 x 8-bits GPIO			
LPC		1 x LPC			
SMBUS		1 x SMBUS			
Power Supply		ATX: VCC、 VSB AT: VCC			
Windows		Windows 10 1809(RS5)			
Linux		Yocto 2.4 Rocko			
Dimension		95*125mm			

Type 6 6th Skylake Series

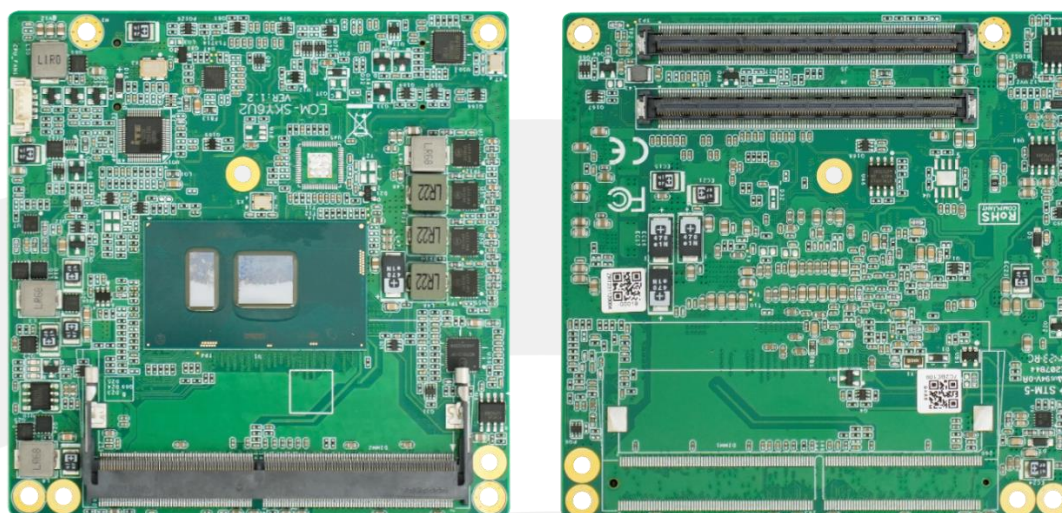
Intel 6th Skylake-H COM-Express Type 6 95*125mm



Model		COM10801-6B	
COMe		2 x COM-E 220Pin	
CPU	CPU	Intel Skylake-H i3/i5/i7	
		I7-6820EQ	I7-6700HQ
	Core Number	4C	4C
	Total Threads	8T	8T
	Max. Speed	3.5GHz	3.5GHz
	L3 Cache	8M	6M
	TDP (W)	45W	45W
Chipset		Intel PCH QM170(Option CM236)	
Memory		On Board 8G DDR4(Option 16G)	
Storage		4 x SATA3.0	
PCI Express x16		1 x PCIe x16	
PCI Express x1		8 x PCIe x1	
Display		3 x DDI(Option HDMI/DP) 1 x eDP	
USB		4 x USB3.0 8 x USB2.0	
Ethernet		Intel®I219-AT	
LPC		1 x LPC	
SMBUS		1 x SMBUS	
Power Supply		DC In	
Windows		Windows 10 1809(RS5)	
Linux		Yocto 2.4 Rocko	
Dimension		95*125mm	

Type 6 6th Skylake Series

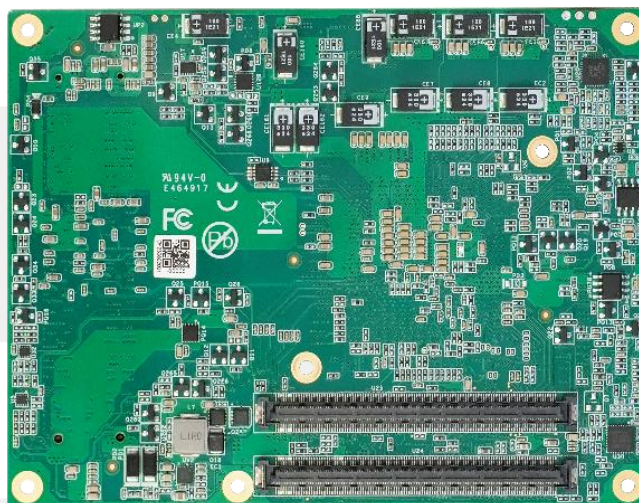
Intel 6th Skylake-U COM-Express Type 6 95*95mm



Model		ECM-SKY6U2		
COMe		2 x COM-E 220Pin		
CPU	CPU	Intel Skylake-U i3/i5/i7		
		i7-6600U	i5-6300U	i3-6100U
	Core Number	2C	2C	2C
	Total Threads	4T	4T	4T
	Max. Speed	3.4GHz	3.0GHz	2.3GHz
	L3 Cache	4MB	3MB	3MB
	TDP (W)	15W	15W	15W
Chipset		Integrated PCH-LP		
Memory		2 x SO-DIMM Max 16G DDR4		
Storage		3 x SATA3.0(Depend on CPU)		
PCI Express x4		1 x PCIe x4		
PCI Express x2		1 x PCIe x2		
PCI Express x1		2 x PCIe x1		
Display		1 x DDI(Option HDMI/DVI/DP) 1 x DDI to VGA(Option HDMI/DVI/DP) 1 x eDP to LVDS(Option DP)		
USB		4 x USB3.0 4 x USB2.0		
Ethernet		Intel®I219-AT		
COM		1 x COM		
GPIO		1 x 8-bits GPIO		
LPC		1 x LPC		
SMBUS		1 x SMBUS		
Power Supply		ATX: VCC、VSB AT: VCC		
Windows		Windows 10 1809(RS5)		
Linux		Yocto 2.4 Rocko		
Dimension		95*95mm		

Type 7 5th Boardwell Series

Intel 7th Boardwell COM-Express Type 7 95*125mm



Model		ECM-6401	
COMe		2 x COM-E 220Pin	
CPU	CPU	Intel Xeon-D D-1548	Intel Pentium D1508
	Core Number	8	2
	Max. Speed	2.0GHz	2.2GHz
	L3 Cache	12MB	3MB
	TDP (W)	45W	25W
Chipset		SOC	
Memory		2 x SO-DIMM Max 64G DDR4	
Storage		2 x SATA3.0	
PCI Express x16		1 x PCIe x16	
PCI Express x8		1 x PCIe x8	
PCI Express x1		7 x PCIe x1	
USB		4 x USB3.0 4 x USB2.0	
Ethernet		Intel® I210-AT 2 x 10G Base-KR	
GPIO		1 x 8-bits GPIO	
LPC		1 x LPC	
SMBUS		1 x SMBUS	
Power Supply		ATX: VCC、VSB AT: VCC	
Input Voltage		Supply Voltage Vin: 8.5V ~ 20V	
Dimension		95*125mm	

深圳智锐通科技有限公司
Shenzhen ZRT Technology Co., Ltd



Official

&



Youtube

- Shenzhen ZRT Technology Co., Ltd
- Email: info@zrt-tech.com
- Tel.: +86-400-838-6869
+86-153-3876-2616
- Website: www.zrt-tech.com
- Address: Room 2105-2106, Building A, Fenghuang Zhigu, No. 50, Tiezai Road, Xixiang Street, Bao'an District, 518100, Shenzhen