



ZRT MSC-2201 Medical All-in-one PC

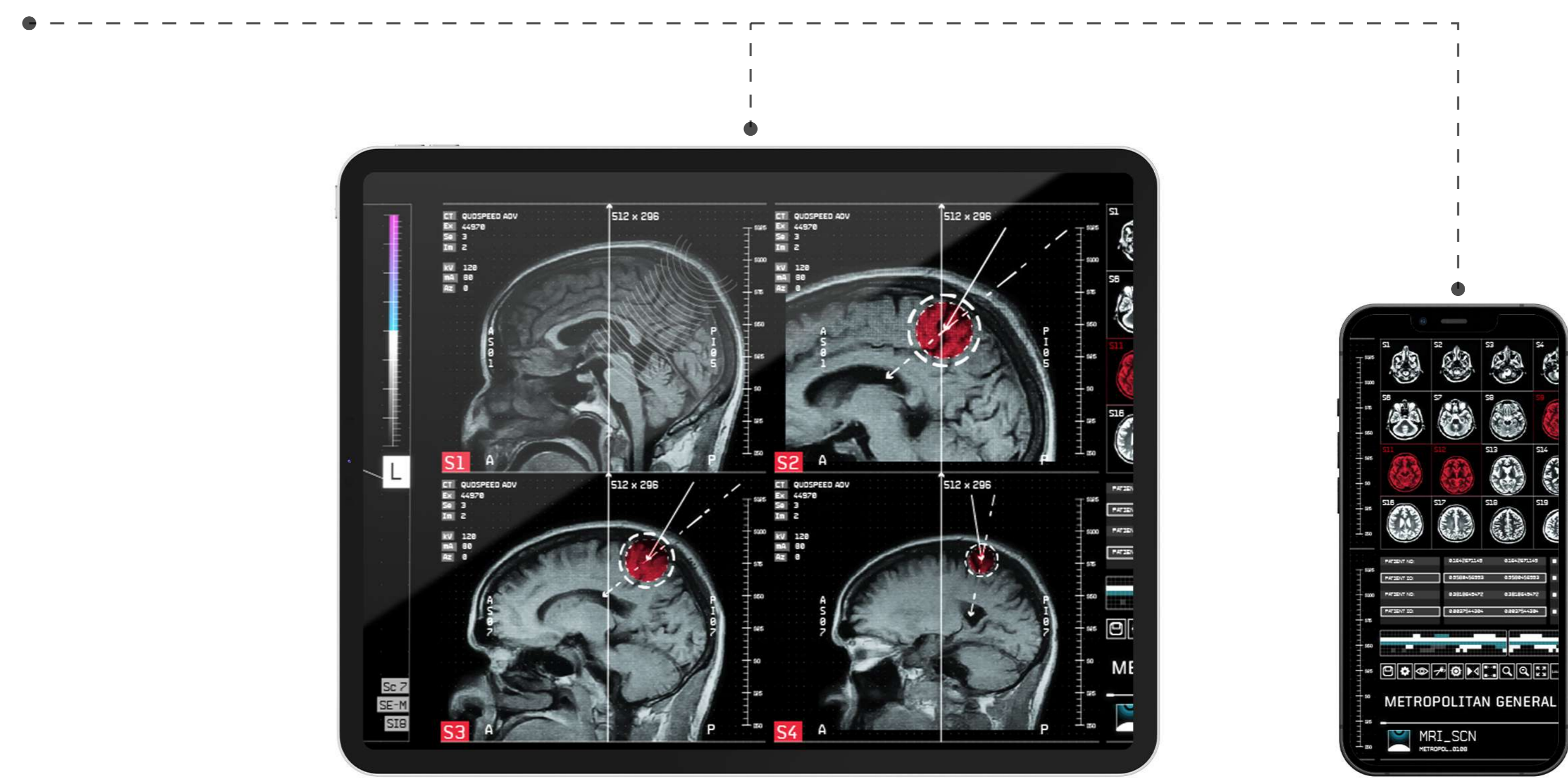
The MSC-2201 is a high-performance all-in-one terminal designed for healthcare scenarios. It integrates an anti-glare capacitive touch screen, high-definition camera, array microphone, barcode scanner, stereo speakers, and cloud services. The device combines multiple functionalities needed by healthcare professionals in their daily routines, such as diagnosis, film reading, and remote consultations, providing a new office experience for healthcare personnels.



Design Background

When patients visit for consultation, they need to carry a large number of films. At the same time, doctors require auxiliary equipment to place and view these films, which brings a lot of inconvenience to both doctors and patients.





Barcode Scanner

The scanner at the bottom of the product can quickly identify the corresponding barcode or QR code and display the patient's imaging data, thereby improving the efficiency of doctors' consultations. Additionally, imaging data can be synchronized to various mobile devices.

Multi-touch Screen

The device applies a multi-touch screen, allowing doctors to use their fingers to select areas or switch materials by touching the screen.



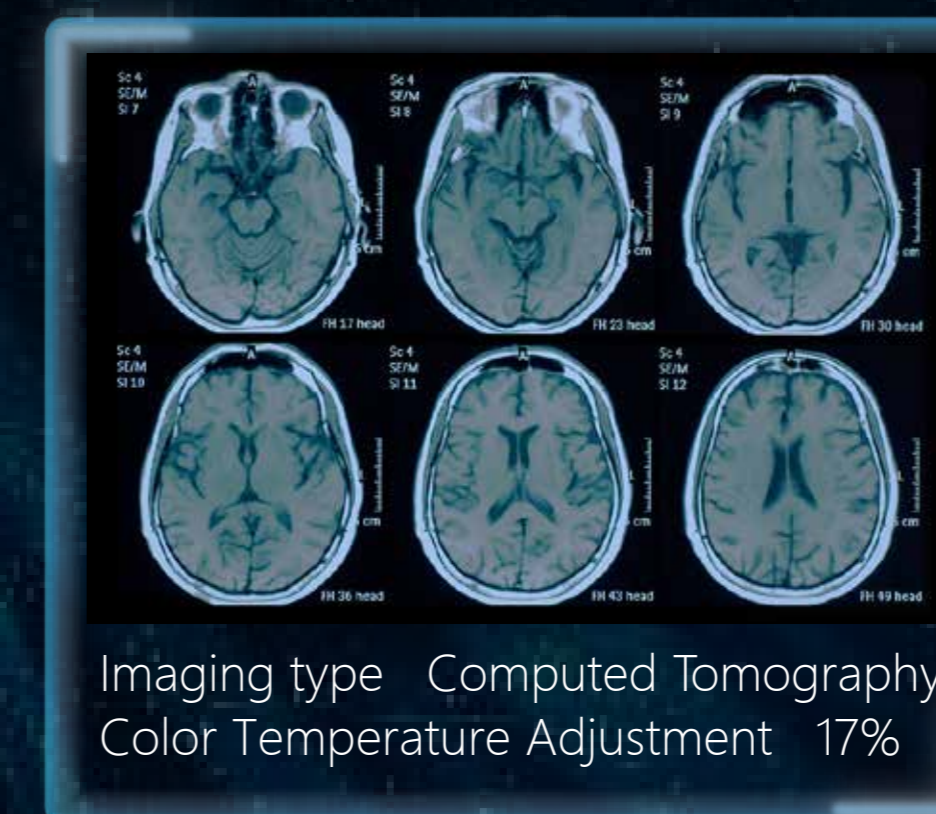
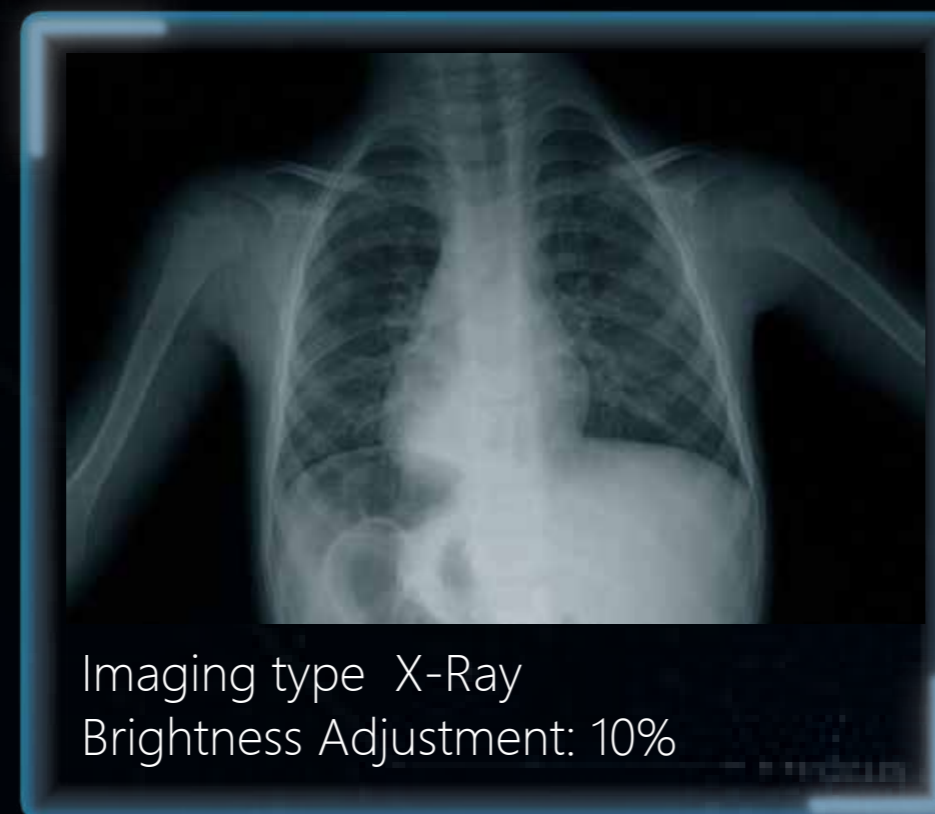


Partial Analysis

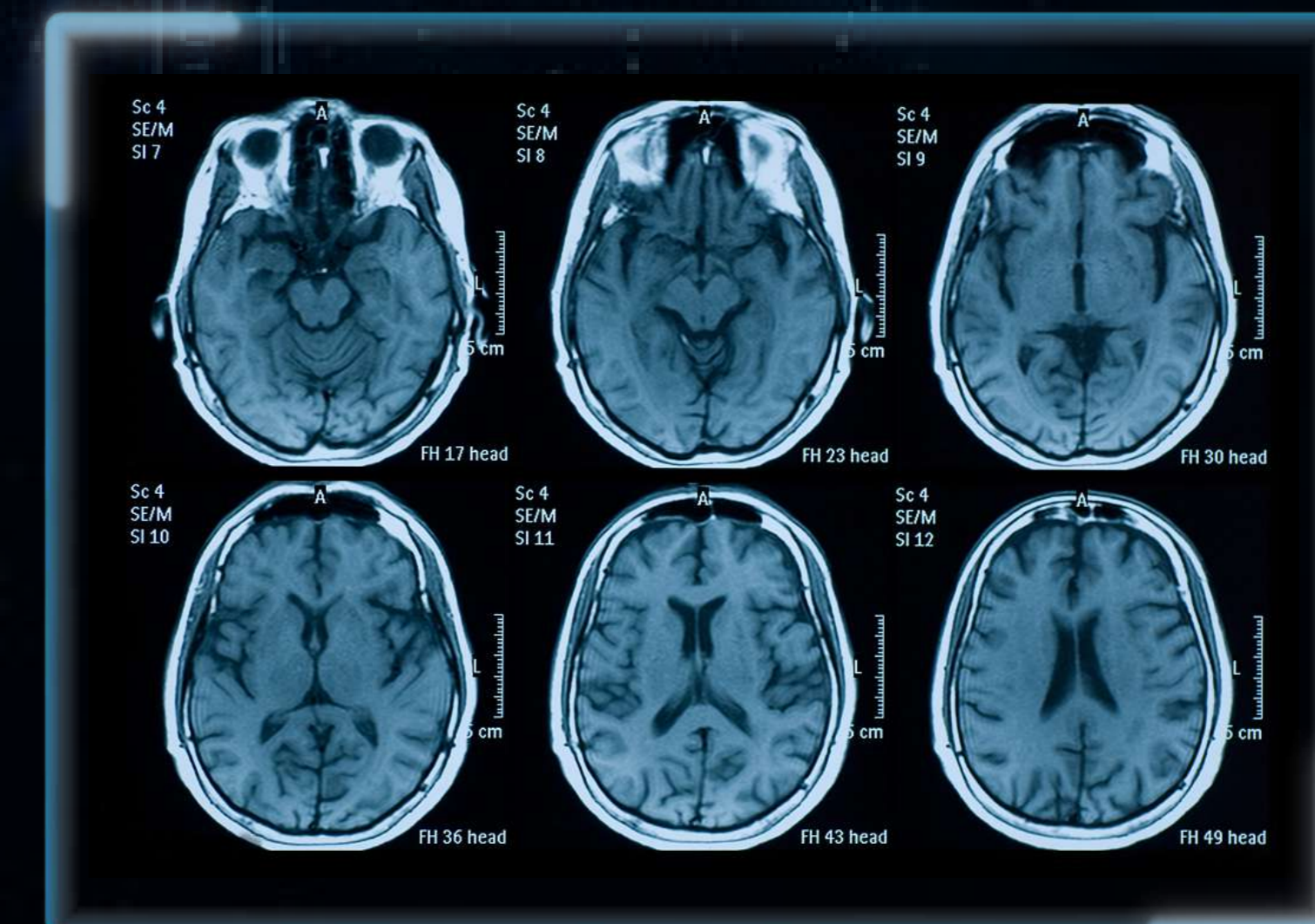
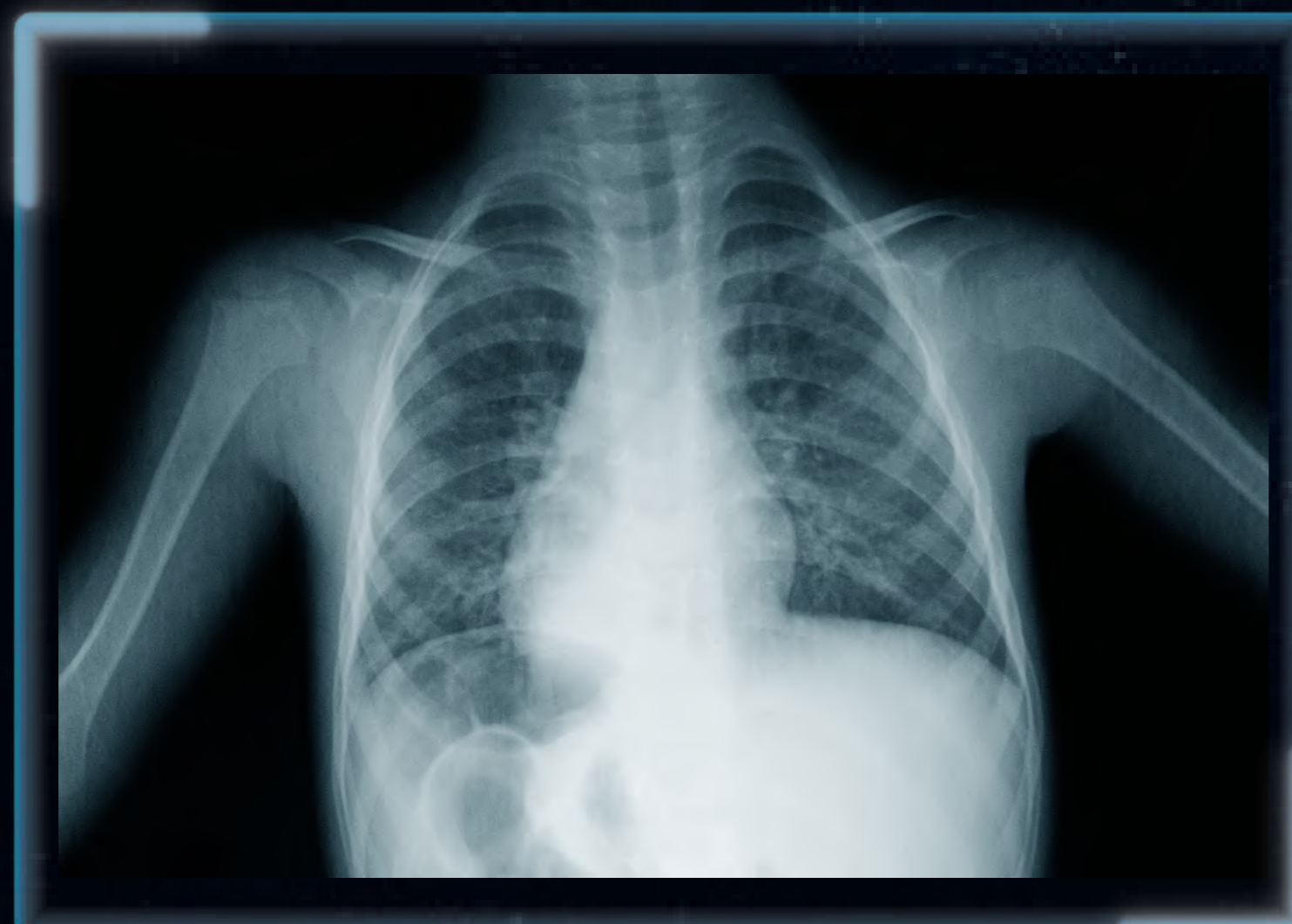
Doctors can use their fingers to frame a local area, which can then be zoomed in or out, or adjust the contrast and transparency to compare with other imaging data for targeted analysis and diagnosis, improving the convenience of diagnosis.

One-Click DICOM Calibration

When imaging data is transferred between various scanning devices, the display of the images may change. The device is equipped with a one-click DICOM calibration function, which can adjust the imaging data to a suitable display condition with one click, greatly facilitating the integration of image information flow between different hardware and software.



DICOM



Versatile Applying Scenarios

The back of the product is equipped with VESA holes, supporting base installation, embedded installation, and wall mounting. It can be set up in nurse stations, outpatient clinics, and patient communication areas, allowing medical staff and patients to view imaging data anytime, anywhere. Contact: info@zrt-tech.com

