



Roadmap-2025 Q2

ZRT Technology Co., Ltd

Edge AI solution provider, COME, MXM, COM-HPC,
SMARC and embedded PC solutions.

info@zrt-tech.com

2025.02.25

PART.

1

COMe Series

2025

2025 Q2

		2025		2025 Q2
Intel Xeon Processors		5 th Broadwell		
		ECM-6401 <i>Type7</i> D1548/D1508		
Intel Core Processors	H Series	7 th Kaby Lake	11 th Tiger Lake	Meteor Lake
		6 th Skylake		Arrow Lake
	COM10801-6B <i>Type6</i> i7-6820EQ/i7-6800HQ		ECM-6103 <i>Type6</i> i7-11850HE/i5-11500HE i3-11100HE	ECM-C141 <i>Type6</i> COM Express R3.1 Ultra 7 165H/155H/165U Ultra 5 135H/125H/135U 2025 May
	ECM-SKY6H1 <i>Type6</i> i7-7700HQ/i7-6822EQ/i7-6822HQ i7-6820EQ/i7-6820HQ/i3-6100E			
U Series	7 th Kaby Lake	11 th Tiger Lake	13 th Raptor Lake	
	6 th Skylake		12 th Alder Lake	
ECM-SKY6U2 <i>Type6</i> i7-6600u/i5-6300u/i3-6100u		ECM-C114 <i>Type6 EC</i> i7-1185G7E/i7-1185GRE i7-1165G7/i5-1135G7/i3-1115G4	ECM-C132/6121 <i>Type6</i> i7-1360P/i5-1350PE/i5-13500H i5-1250PE/i3-1315U/7305e	
		ECM-TGL6U2/1 <i>Type6</i> i7-1185G7E/i7-1185GRE i7-1165G7/i5-1135G7/i3-1115G4		
Intel ATOM Processors		10 th Comet Lake	11 th Elkhart Lake	13 th Raptor Lake
		ECM-6201 <i>Type6</i> J6426/J6413/J6412/N6210	ECM-6202 <i>Typ10</i> x6211e/J6426/J6412	12 th Alder Lake
				Twin Lake
				ECM-A121 <i>Type10</i> 2025 May x7211e/x7213e/i3-N305/N97
				ECM-C133 <i>Type6</i> 2025 Q4 x7211e/x7213e/i3-N305/N97

CPU	SSE4.1	SSE4.2	AVX2	AVX-512
Ultra 7 165U/155H、Ultra 5 125H/125U	✓	✓	✓	
i7-1360P/i5-1350PE/i3-1315U	✓	✓	✓	
i5-1250PE	✓	✓	✓	
7305E	✓	✓	✓	
i7-11850HE/i5-11500HE/i3-11100HE	✓	✓	✓	✓
i7-1165G7/i5-1135G7/i3-1115G4	✓	✓	✓	✓
i7-7700HQ	✓	✓	✓	
i7-6822EQ/i7-6820EQ/i7-6820HQ/i7-6700HQ/i3-6100E	✓	✓	✓	
i7-6600U/i5-6300U/i3-6100U	✓	✓	✓	
D-1548/D1508			✓	

Meteor Lake

ECM-C141

2025 May

- Type 6
- Meteor Lake
- Max 96G DDR5
- 3*HDMI/DVI/DP
- 1*LVDS (Option eDP)
- 2*USB4.0
- 4*USB 3.2
- 8*USB2.0
- 95*95mm

13th Raptor Lake 12th Alder Lake

ECM-A121

2025 May

- Type 10
- 12th ATOM
- Max 16G LDDR4x
- 4*PCIe 1x
- 1*HDMI/DP
- 1*LVDS (Option eDP)
- 2*USB 3.0
- 8*USB2.0
- 85*55mm

ECM-C132/6121

- Type 6
- 12th Alder Lake-U
- Max 64G DDR4
- 1*PCIe 16x
- 8*PCIe 1x
- 3*HDMI/DVI/DP
- 1*VGA
- 1*LVDS (Option eDP)
- 4*USB 3.2
- 8*USB2.0
- 95*95mm

11th Tiger Lake

ECM-6202

- Type 10
- 11th Elkhart Lake
- Max 16G LDDR4x
- 4*PCIe 1x
- 1*DP
- 1*LVDS (Option eDP)
- 2*USB 3.0
- 8*USB2.0
- 85*55mm

ECM-C114

- Type 6
- 11th Tiger Lake-U
- Max 64G DDR4
- 2*SATA 3.0
- 2*PCIe 4x
- 3*PCIe 1x
- HDMI/DP/VGA
- eDP (Option LVDS)
- 4*USB3.0
- 8*USB2.0
- 95*95mm
- **EC**

ECM-6103

- Type 6
- 11th Tiger Lake-H
- QM580E
- Max 128G DDR4
- 4*SATA 3.0
- 1*PCIe 16x
- 8*PCIe 1x
- 3*HDMI/DVI/DP
- 1*VGA
- 1*LVDS (Option eDP)
- 95*125mm

ECM-TGL6U2

- Type 6
- 11th Tiger Lake-U
- Max 64G DDR4
- 2*SATA 3.0
- 2*PCIe 4x
- 3*PCIe 1x
- HDMI/DP/VGA
- eDP (Option LVDS)
- 4*USB3.0
- 8*USB2.0
- 95*95mm

10th Comet Lake

ECM-6201

- Type 6
- Intel Elkhart Lake
- Max 32G DDR4
- 2*SATA 3.0
- 1*PCIe 4x
- 1*PCIe 2x
- 1*PCIe 1x
- 2*HDMI/DP
- 1*LVDS (Option eDP)
- 4*USB3.0
- 8*USB2.0
- 95*95mm

ECM-TGL6U1

- Type 6
- 11th Tiger Lake-U
- Max 64G DDR4
- 2*SATA 3.0
- 1*PEG 4x
- 1*PCIe 4x
- 3*PCIe 1x
- HDMI/DP/VGA
- eDP (Option LVDS)
- 2*USB3.0
- 8*USB2.0
- 95*95mm

7th Kaby Lake 6th Skylake

ECM-SKY6U2

- Type 6
- 6/7th Skylake-U
- Max 16G DDR4
- 2*SATA 3.0
- 1*PCIe 4x
- 1*PCIe 2x
- 2*PCIe 1x
- HDMI/DP/VGA
- eDP (Option LVDS)
- 4*USB3.0
- 8*USB2.0
- 95*95mm

ECM-SKY6H1

- Type 6
- 6/7th Skylake-H
- CM236/QM170
- Max 32G DDR4
- 4*SATA 3.0
- 1*PCIe 16x
- 8*PCIe 1x
- HDMI/DP/eDP (Option VGA/LVDS)
- 4*USB3.0
- 8*USB2.0
- 95*125mm

5th Broadwell

ECM-6401

- Type 7
- Xeon D-1500 Series
- Max 64G DDR4
- 2*SATA 3.0
- 1*PCIe 16x
- 1*PCIe 8x
- 7*PCIe 1x
- 4*USB3.0
- 4*USB2.0
- 95*125mm

COM10801-6B

- Type 6
- 6/7th Skylake-H
- CM236/QM170
- 16G DDR4 On Board
- 4*SATA 3.0
- 1*PCIe 16x
- 8*PCIe 1x
- 3*HDMI/DP
- 1*eDP
- 4*USB3.0
- 8*USB2.0
- 95*125mm

Type 7



ECD-TYPE7A

- Type 7
- 2*SATA 3.0
- 1*PCI-Express 16x
- 1*PCI-Express 8x
- 1*PCI-Express 4x
- 4*10GBE SFP
- 1*Lan
- 4*USB3.0
- 2*DB9
- 1*GPIO
- 1*LPC
- 2*I2C
- ATX(304.8*243.8mm)

Type 6

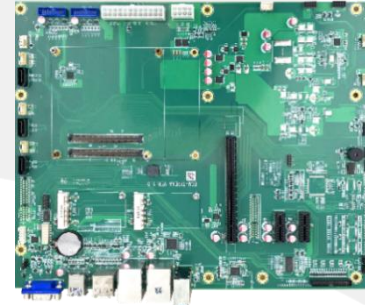
COMING SOON



ECM-TYPE6C

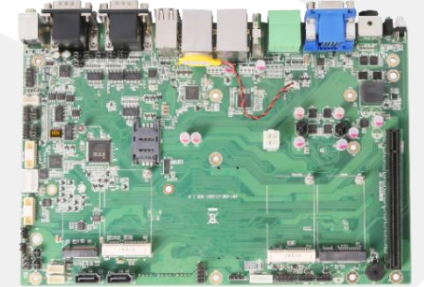
2025 Q3

- Type 6
- 4 x SATA 3.0
- 1*VGA
- 1*DP
- 1*LVDS(Option eDP)
- 1*PCI-Express 16x
- 1*PCI-Express 4x
- 4*PCI-Express 1x
- **2*USB4.0**
- 4*USB3.0
- 2*USB2.0
- 1*DB9
- 1*LAN



ECM-TYPE6B

- Type 6
- 1*SATA 3.0
- 3*HDMI
- 3*DP
- 1*LVDS(Option eDP)
- 1*PCI-Express 8x
- 4*PCI-Express 4x
- 4*USB3.0
- ATX(304.8*244*1.6mm)



CMC-C11001

- Type 6
- 2*Mini PCIe
- 2*SATA 3.0
- 1*mSATA 3.0
- 1*MXM3.0
- 1*HDMI
- 1*VGA
- 1*LVDS(Option eDP)
- 1*PCI-Express 16x
- 4*USB3.0
- 6*USB2.0
- 10*DB9
- 250*170mm

ECM-TYPE6A

- Type 6
- 1*Mini PCIe
- 3*SATA 3.0
- 1*mSATA 3.0
- 1*HDMI
- 1*DP
- 1*VGA
- 1*LVDS(Option eDP)
- 1*PCI-Express 16x
- 1*PCI-Express 4x
- 2*PCI-Express 1x
- 4*USB3.0 + 4*USB2.0
- 6*DB9
- ATX(304.8*244*1.6mm)

12th Alder Lake**NEW****ECM-H301**

- COM-HPC
- 12th Alder Lake-S
- R680E
- Max 128G DDR5
- 2*SATA3.0
- 1*PCIe 5.0 16x
- 1*PCIe 4.0 4x
- 12*PCIe 4.0 1x
- 10*PCIe 3.0 1x
- 3*DDI up to 8K
- 4*GPI
- 4*GPO
- 2*COM
- 2*USB3.2
- 4*USB3.0

**Meteor Lake****ECM-H141
TBD**

- COM-HPC
- Meteor Lake
- Max 96G DDR5
- 2*SATA 3.0
- 1*PCIe 5.0 8x
- 1*PCIe 4.0 4x
- 8*PCIe 4.0 1x
- DDI up to 8K
- 4*GPI
- 4*GPO
- 2*COM
- 2*USB3.2
- 4*USB3.0

PART.

2

x86 Series

2025

2025 Q3

Intel Core
ProcessorsLGA
Series3th Sandy/IvyATX0-10701
*ATX*EMA-B65
*mATX*7th Kaby Lake6th SkylakeEMA-1302
*ATX*EMA-1301
*ATX***NEW** ECO-Q170
*mATX***NEW** ECO-H110
*mATX*ZRTB-11812
ITX **MXM**EMA-7301
*ITX*KCB12001
190*165mm **MXM**10th Coffee LakeMBC-11001
228*218mm **MXM**Ezt-Q370B
200*200mm **MXM**

Raptor Lake S Refresh

13th Raptor Lake S12th Alder Lake SECO-Q670 2025 Jun
*ATX*EMA-1304
*ATX*ECO-Q670 2025 Q3
*mATX*EMA-8141
STX **MXM**EMA-7133
*ITX*EMA-7132
ITX

Bartlett Lake S

		2025				Q2	Q3
Intel Core Processors	H Series	7 th Kaby Lake 6 th Skylake ITX-71101 ITX MXM	10 th Coffee Lake H EMA-7102 ITX MXM	11 th Tiger Lake H EMA-7112 <i>2025 May</i> ITX MXM EMA-7103 ITX MXM	Meteor Lake H 13 th Raptor Lake 12 th Alder Lake		Arrow Lake H
	U/P Series	7 th Kaby Lake 6 th Skylake EMB-3203 3.5" EMB-3201 3.5"			Meteor Lake U 13 th Raptor Lake 12 th Alder Lake	EMB-3131 <i>TBD</i> 3.5" EMB-2121 10*10cm	Arrow Lake U
Intel ATOM Processors		Bay Trail EMB-3205 3.5" MB3-10101 3.5"	11 th Elkhart Lake EMB-3204 3.5" EMB-3204A <i>2025 May</i> 3.5"	12 th Alder Lake N Twin Lake EMB-4131 <i>2025 Q3</i> 4"			

STX

EMA-8141

- Intel Raptor Lake S Refresh/Raptor Lake S/Alder Lake S
- PCH H610/Q670
- Max 64G DDR5
- 2*M.2
- 4*SATA3.0
- 1*PCIe 4x
- 4*DP
- 2*HDMI
- 4*RJ45
- 4*DB9
- 170*190mm

EMA-7U11

TBD

- Intel Meteor Lake-H
- Max 64G DDR5
- 4*M.2
- 4*SATA3.0
- 1*PCIe 4x
- 1*DP
- 2*HDMI
- 1*LVDS/eDP
- 2*RJ45
- 2*DB9
- 4*USB3.2
- 4*USB4.0
- mITX(170*170mm)

mITX

EMA-7112

- Intel Tiger Lake-H
- Max 64G DDR4
- 3*M.2
- 2*SATA3.0
- 1*PCIe 4x
- 2*DP
- 2*HDMI
- 1*LVDS/eDP
- 2*RJ45
- 2*DB9
- 4*USB3.2
- 4*USB4.0
- mITX(170*170mm)

EMA-7103

- Intel Tiger Lake-H
- PCH QM580
- Max 64G DDR4
- 3*M.2
- 1*PCIe 4x
- 1*SATA3.0
- 1*HDMI
- 1*DP
- 1*eDP
- 1*LVDS
- 1*HDMI or DP
- 2*RJ45
- 1*DB9
- mITX(170*170mm)

EMA-7102

- Intel Coffee Lake-H
- PCH QM370
- Max 64G DDR4
- 3*M.2
- 1*PCIe 4x
- 1*SATA 3.0
- 1*mSATA
- 1*HDMI
- 1*DP
- 1*eDP
- 1*LVDS
- 2*RJ45
- 1*DB9
- mITX(170*170mm)

ZRTB-11812

- Intel Skylake / Kaby Lake
- PCH H110
- Max 32G DDR4
- 1*Mini PCIe
- 1*M.2
- 1*SATA3.0
- 2*HDMI
- 2*DP
- 1*LVDS
- 1*RJ45
- mITX(190*170mm)

ITX-71101

- Intel Skylake HQ
- PCH QM170
- Max 32G DDR4
- 3*M.2
- 1*PCIe 4x
- 2*SATA3.0
- 2*HDMI
- 1*DP
- 1*eDP
- 2*RJ45
- 1*DB9
- mITX(170*170mm)

EZT-7201

- Intel Skylake-U
- Max 16G DDR4
- 2*M.2
- 2*SATA3.0
- 2*HDMI
- 1*DP
- 1*eDP
- 4*RJ45
- 4*DB9
- mITX(190*170mm)

ZRT Define

EZT-Q370B

- Intel Coffee lake-S
- PCH Q370
- Max 32G DDR4
- 3*M.2
- 1*SIM
- 1*SATA3.0
- 2*HDMI
- 1*DP
- 1*HDMI/DP
- 2*RJ45
- 6*DB9
- 200*200mm

KBC12001

- Intel Skylake / Kaby Lake
- Max 32G DDR4
- 2*Mini PCIe
- 2*M.2
- 1*SIM
- 1*SATA3.0
- 2*HDMI
- 1*DP
- 2*RJ45
- 2*DB9
- 190*165mm

ZRTK-17611A

- Intel Skylake/Kaby Lake
- PCH B250
- Max 32G DDR4
- 1*M.2
- 1*mSATA
- 1*SATA3.0
- 1*HDMI
- 1*RJ45
- 1*RS232/422/485
- 4*USB3.0
- 2*USB2.0
- 180*195mm

MBC-11001

- Intel Skylake / Kaby Lake
- Max 32G DDR4
- 2*Mini PCIe
- 1*M.2
- 2*SIM
- 2*SATA3.0
- 1*mSATA
- 2*HDMI
- 4*DP
- 1*VGA
- 1*LVDS/eDP
- 4*DB9
- 228*218mm

ATX

EMA-1142 2025 Jun

- Intel Raptor Lake S Refresh/Raptor Lake
- PCH Q670
- Max 128G DDR5
- 2*PCIe 16x+3*PCIe 4x+2*PCI
- 4*SATA3.0
- 1*M.2
- 2*HDMI+1*VGA+1*DVI+1*DP
- 2*DB9
- 4*USB3.2+6*USB2.0
- ATX(308.8*244mm)

EMA-1302

- Intel 6/7th Skylake/Kaby Lake
- PCH Q170
- Max 128G DDR4
- 2*PCIe 16x+3*PCIe 4x+2*PCI
- 4*SATA3.0
- 1*mSATA
- 1*HDMI+1*VGA+1*DVI
- 6*DB9
- 6*USB3.0+7*USB2.0
- ATX(308.8*244mm)

EMA-1301

- Intel 6/7th Skylake/Kaby Lake
- PCH Q170
- Max 128G DDR4
- 1*PCIe 16x+1*PCIe 4x+1*PCIe 1x+4*PCI
- 4*SATA3.0
- 1*mSATA
- 1*HDMI+1*VGA
- 6*DB9
- 6*USB3.0+7*USB2.0
- ATX(308.8*244mm)

mATX

EMA-9141 2025 Q3

- Intel Raptor Lake S Refresh/Raptor Lake
- PCH Q670
- Max 128G DDR5
- 2*PCIe 16x+1*PCIe 4x+1*PCI
- 4*SATA3.0
- 2*M.2
- 1*HDMI+1*VGA+1*DP
- 6*DB9
- 4*USB3.2+5*USB2.0
- 243.8*243.8mm

EMA-B65

- Intel Sandy/Ivy
- PCH B65
- Max 16G DDR3
- 1*PCIe 16x+1*PCIe 4x+2*PCI
- 4*SATA
- 1*mSATA
- 1*DVI+1*VGA
- 2*RJ45
- 6*DB9
- 9*USB2.0
- 243.8*243.8mm

EMA-7133

- Intel 12th Alder Lake
- SOC
- Max 64G DDR4
- 2*SATA3.0
- 2*M.2
- 2*HDMI+1*VGA+1*L VDS+1*eDP
- 1*RJ45
- 2*DB9
- 2*USB3.1+4*USB2.0
- mITX(170*170mm)

EMA-1304

- Intel 12/13th Raptor Lake/Alder Lake
- PCH Q670
- Max 128G DDR5
- 1*PCIe 16x+4*PCIe 4x+2*PCI
- 4*SATA3.0
- 1*M.2
- 2*HDMI+1*VGA+1*DP
- 2*DB9
- 6*USB3.0+7*USB2.0
- ATX(308.8*244mm)

EMA-1301H

- Intel 6/7th Skylake/Kaby Lake
- PCH H110
- Max 64G DDR4
- 1*PCIe 16x+1*PCIe 1x+4*PCI
- 3*SATA3.0
- 1*mSATA
- 1*HDMI+1*VGA
- 6*DB9
- 4*USB3.0+7*USB2.0
- ATX(308.8*244mm)

ATX0-10701

- Intel Sandy/Ivy
- PCH B75
- Max 32G DDR3
- 1*PCIe 16x+1*PCIe 4x+1*PCIe 1x+4*PCI
- 5*SATA3.0
- 1*mSATA
- 1*DVI+1*VGA
- 6*DB9
- 4*USB3.0+9*USB2.0
- ATX(308.8*244mm)

NEW EMA-9081

- Intel 6/7/8/9th Skylake/Kaby Lake/Coffee Lake
- PCH H110
- Max 64G DDR4
- 2*PCIe 16x+1*PCIe 4x+1*PCI
- 3*SATA3.0
- 1*M.2
- 2*HDMI+1*VGA
- 6*DB9
- 4*USB3.0+4*USB2.0
- 244*244mm

EMA-7132

- Intel 12/13th Alder Lake/Raptor Lake-H
- Max 64G DDR5
- 1*PCIe 16x+1*PCIe 4x
- 2*SATA3.0
- 3*M.2
- 2*HDMI+1*DP
- 4*RJ45
- 2*DB9
- 4*USB3.1+2*USB2.0
- mITX(170*170mm)

EMA-7301

- Intel 6/7th Skylake / Kaby Lake
- PCH H110
- Max 32G DDR4
- 1*PCIe 16x
- 2*SATA3.0
- 1*mSATA
- 1*HDMI1.4a+1*VGA
- 6*RJ45
- 3*DB9
- 4*USB3.0+4*USB2.0
- mITX(170*170mm)

4"

EMB-4131

2025 Q3

- Intel 13th Raptor Lake-U
- 64G DDR5
- 2*M.2
- 1*SATA
- 1*SIM
- 2*HDMI
- 1*eDP/LVDS
- 4*USB 3.2
- 4*USB2.0
- 3*RJ45
- 4*RS232/485/422
- 4"(165*115mm)

EMB-3121

TBD

- Intel 12th Alder Lake-U
- 64G DDR4/5
- 1*HDMI
- 1*DP
- 1*LVDS or eDP
- 4 *USB 3.2
- 4*USB2.0
- 2*RJ45
- 2*RS232
- 2*RS485
- 3.5"(146*101mm)

3.5"

EMB-3201

- Intel 6/7th Skylake/Kaby lake-U
- 32G DDR4
- 2*M.2
- 1*SIM
- 1*PCIe 4.0
- 1*SATA3.0
- 1*HDMI+1*LVDS (Option eDP)
- 2*RJ45
- 6*DB9
- 3.5"(146*101mm)

EMB-3203

- Intel 6/7th Skylake/Kaby lake-U
- 32G DDR4
- 1*Mini PCIe
- 1*SIM
- 1*SATA3.0
- 1*mSATA
- 1*HDMI+1*VGA+1*LVDS(Option eDP)
- 3 *RJ45
- 4*DB9
- 3.5"(146*101mm)

EMB-3204A

2025 May

- Intel Pentium J6412
- 32G DDR4
- 2*M.2
- 1*SATA3.0
- 2*HDMI
- 1*LVDS
- 2*RJ45
- 4*RS232
- 4*USB3.0
- 4*USB2.0
- 3.5"(146*113.6mm)

EMB-3204

- Intel Pentium J6412
- 32G DDR4
- 2*M.2
- 1*Mini PCIe
- 1*SATA3.0
- 3*HDMI
- 1*LVDS
- 1*TV-Out
- 1*RJ45
- 2*DB9
- 4*USB3.0+2*USB2.0
- 3.5"(146*113.6mm)

100*100mm

EMB-2121

- Intel 12th Alder Lake-U/P
- 64G DDR5
- 2*M.2
- 1*SATA3.0
- 2*HDMI2.0
- 2*Type C
- 2*USB3.2
- 1*USB2.0
- 2*RJ45
- 2*RS232
- 100*100mm

MB3-10101

- Intel Celeron J1800/J1900
- 4G DDR3L
- 1*Mini PCIe
- 1*SIM
- 1*SATA3.0
- 1*mSATA
- 1*HDMI
- 1*VGA
- 2*RJ45
- 6*DB9
- 3.5"(146*101mm)

Other

EMB-3205

- Intel Bay-trail J1900
- Max 8G DDR3L
- 1*mSATA
- 1*HDMI1.4a
- 1*VGA
- 1*RJ45
- 3*DB9
- 4*USB3.0
- 2*USB2.0
- 121*129*1.6mm

12th Alder Lake

NEW MIN-M01

- Intel Raptor Lake S Refresh/Raptor Lake S/Alder Lake S
- PCH H610/Q670
- Max 64G DDR5
- 2*M.2
- 1*SATA3.0
- 2*HDMI
- 4*DP
- 4*RJ45
- 4*DB9
- 4*USB3.0
- 4*USB2.0
- 304*233*115mm

CDM-2U02

TBD

- Intel Raptor Lake/Alder Lake
- PCH H610/Q670
- Max 64G DDR5
- 2*M.2
- 1*SATA3.0
- 1*HDMI
- 3*DP
- 4*RJ45
- 4*DB9
- 4*USB3.0
- 4*USB2.0
- 1*PCIe 4x

11th Tiger Lake

MIN-EC09B

- Intel Tiger Lake-H
- PCH QM580
- Max 64G DDR4
- 3*M.2
- 1*SIM
- 1*SATA3.0
- 2*HDMI
- 1*DP
- 2*RJ45
- 1*DB9
- 6*USB3.0
- 2*USB2.0
- 1*Type C
- 230*176*83.5mm

MIN-EC10

- Intel Tiger Lake-H
- PCH QM580
- Max 64G DDR4
- 3*M.2
- 1*SIM
- 1*SATA3.0
- 2*HDMI
- 1*DP
- 2*RJ45
- 1*DB9
- 5*USB3.0
- 1*Type C
- 285*225*98mm

CDM-2U03

TBD

- Intel Tiger Lake-H
- PCH QM580
- Max 64G DDR4
- 3*M.2
- 1*SIM
- 2*SATA
- 2*RJ45
- 2*DP
- 2*HDMI
- 4*USB3.2
- 4*USB2.0
- 220*200*94.5mm

HLC-6009

2025 Apr

- Intel Tiger Lake-H
- PCH QM580
- Max 64G DDR4
- 3*M.2
- 1*SIM
- 2*SATA
- 2*RJ45+1*千兆
- 2*DP
- 2*HDMI
- 4*USB3.2
- 4*USB2.0
- 2*RS232
- 220*200*94.5mm

HLC-6008

2025 Apr

- Intel Tiger Lake-H
- PCH QM580
- Max 64G DDR4
- 3*M.2
- 1*SIM
- 2*SATA
- 2*RJ45
- 2*DP
- 2*HDMI
- 4*USB3.2
- 4*USB2.0
- 220*200*94.5mm

EOL HLC-6007

- Intel Tiger Lake-H
- PCH QM580
- Max 64G DDR4
- 3*M.2
- 1*SIM
- 1*SATA
- 2*RJ45+1*千兆
- 2*DP
- 2*HDMI
- 3*USB3.0
- 2*USB2.0
- 2*RS232
- 220*200*94.5mm

10th Coffee Lake

MIN-EC09A

- Intel Coffee Lake-H
- Max 32G DDR4
- 3*M.2
- 2*HDMI
- 1*DP
- 2*RJ45
- 2*DB9
- 6*USB3.0+4*USB2.0
- 282*208*79.5mm

MIN-EC09C

- Intel Coffee Lake-H
- Max 64G DDR4
- 3*M.2
- 2*RJ45
- 1*DP
- 1*HDMI
- 4*USB3.0
- 4*USB2.0
- 230*176*83.5mm

EOL HLC-6006

- Intel Tiger Lake-H
- Max 64G DDR4
- 3*M.2
- 2*RJ45
- 1*DP
- 1*HDMI
- 4*USB3.0
- 4*USB2.0
- 220*200*94.5mm

MIN-EC05A

- Intel Coffee Lake-S
- Max 32G DDR4
- 3*M.2
- 2*HDMI
- 1*DP
- 2*RJ45
- 2*DB9
- 6*USB3.0+2*USB2.0
- 235*206*52mm

MIN-EC05B

- Intel Coffee Lake-S
- Max 32G DDR4
- 3*M.2
- 2*HDMI
- 1*DP
- 2*RJ45
- 10*DB9
- 6*USB3.0+4*USB2.0
- 242*206*76mm

EAC-Z01-A

- Intel Coffee Lake-H
- Max 64G DDR4
- 3*M.2
- 1*HDMI
- 1*DP
- 2*RJ45
- 1*Capture Card
- 3*USB3.0+2*USB2.0
- 365*245*77.5mm

6th Skylake/7th Kaby Lake



EAC-CC02-B00

- Intel Skylake / Kaby Lake
- PCH Q170
- Max 32G DDR4
- 2*M.2
- 7*RJ45
- 3*DB9
- 4*DP
- 2*HDMI
- 335*224*98mm



EAC-CC02-C00

- Intel Skylake / Kaby Lake
- PCH Q170
- Max 32G DDR4
- 2*M.2
- 2*HDMI
- 4*DP
- 7*RJ45
- 3*DB9
- 335*224*98mm



EAC-CC02-E00

- Intel Skylake / Kaby Lake
- Max 32G DDR4
- 2*M.2
- 3*RJ45
- 1*DB9
- 4*DP
- 2*HDMI
- Capture 2*HDMI
- 335*224*98mm



EAC-CC02-A00

- Intel Skylake / Kaby Lake
- PCH Q170
- Max 32G DDR4
- 2*M.2
- 3*RJ45
- 1*DB9
- 4*DP
- 2*HDMI
- 335*224*98mm



MIN-EC02

- Intel Skylake / Kaby Lake
- PCH B250
- Max 32G DDR4
- 2*M.2
- 2*HDMI
- 1*DP
- 2*RJ45
- 2*DB9
- 190*210*69mm



EAC-CC02-AC0

- Intel Skylake-S / Kaby Lake-S
- PCH Q170/H110
- Max 32G DDR4
- 1*M.2
- 3*RJ45
- 2*DB9
- 335*222.5*98mm

12/13th Alder Lake、Raptor Lake



APU-4U04
2025 Apr

- Intel 12/13th Alder Lake/Raptor Lake
- Max 128G DDR5
- 1*M.2
- 1*Mini PCIe
- 4*SATA
- 4*RJ45
- 8*USB3.2
- 3*USB2.0
- 2*PCIe 16x
- 1*PCIe 8x
- 2*PCI
- 1*DP++
- 1*VGA
- 2*RS232(Option)
- 2*RS232/422/485(Option)
- 366*198*355mm



APU-4U03
TBD

- Intel 12/13th Alder Lake/Raptor Lake
- Max 128G DDR5
- 1*M.2
- 1*Mini PCIe
- 4*SATA
- 4*RJ45
- 8*USB3.2
- 3*USB2.0
- 2*PCIe 16x
- 1*PCIe 8x
- 2*PCI
- 1*DP++
- 1*VGA
- 2*RS232(Option)
- 2*RS232/422/485(Option)



CDM-4U02
TBD

- Intel 12/13th Alder Lake-H/Raptor Lake-H
- Max 64G DDR5
- 3*M.2
- 2*SATA
- 4*RJ45
- 4*USB3.1
- 2*USB2.0
- 2*PCIe 16x
- 1*DP
- 1*HDMI
- 2*RS232(Option)
- 2*RS485(Option)



CDM-4U01
2025 Apr

- Intel 12/13th Alder Lake-H/Raptor Lake-H
- Max 64G DDR5
- 3*M.2
- 2*SATA
- 4*RJ45
- 4*USB3.1
- 2*USB2.0
- 2*PCIe 16x
- 1*DP
- 1*HDMI
- 2*RS232(Option)
- 2*RS485(Option)
- 280*272*145mm



CDM-2U01

- Intel 12/13th Alder Lake-H/Raptor Lake-H
- Max 64G DDR5
- 3*M.2
- 2*SATA
- 4*RJ45
- 4*USB3.1
- 2*USB2.0
- 2*PCIe 16x
- 1*DP
- 1*HDMI
- 2*RS232
- 2*RS485
- 280*268*90mm

4U

APC-883T

- Gray
- Support EMC
- 470*427*177.5mm
- For ATX/mATX



APC-883T

- Black
- Support EMC
- 470*427*177.5mm
- For ATX/mATX



Embedded/Desktop

APC-7190T

- White
- 330*360.3*190mm
- For ATX/mATX



APC-7180T

- 4.7kg
- Gray
- 330*323*180mm
- For ATX/mATX



APC-B2002T

- Black
- 245*245*89mm
- For EMA-7301



Fanless

EFC-D202

- 1.1kg
- Gray
- 203*112*58mm
- For MB3-10101



EFC-D203

- Gray
- 203.4*129.4*84.2mm
- For EMA-3201



PART.

3

SMARC Series

Apollo Lake



EZT-E3950B

- Intel Atom X7 E3950
- R680E
- 8G LPDDR4
- 1*SATA3.0
- 64G EMMC
- 1*PCIe 2.0 4x
- 2*DDI
- 1*eDP/LVDS
- 1*8bit GPIO
- 2*LAN
- 2*USB3.0
- 4*USB2.0
- 82*50*1.2mm

12th Alder Lake-N

COMING SOON

EZT-S121

2025 Jul

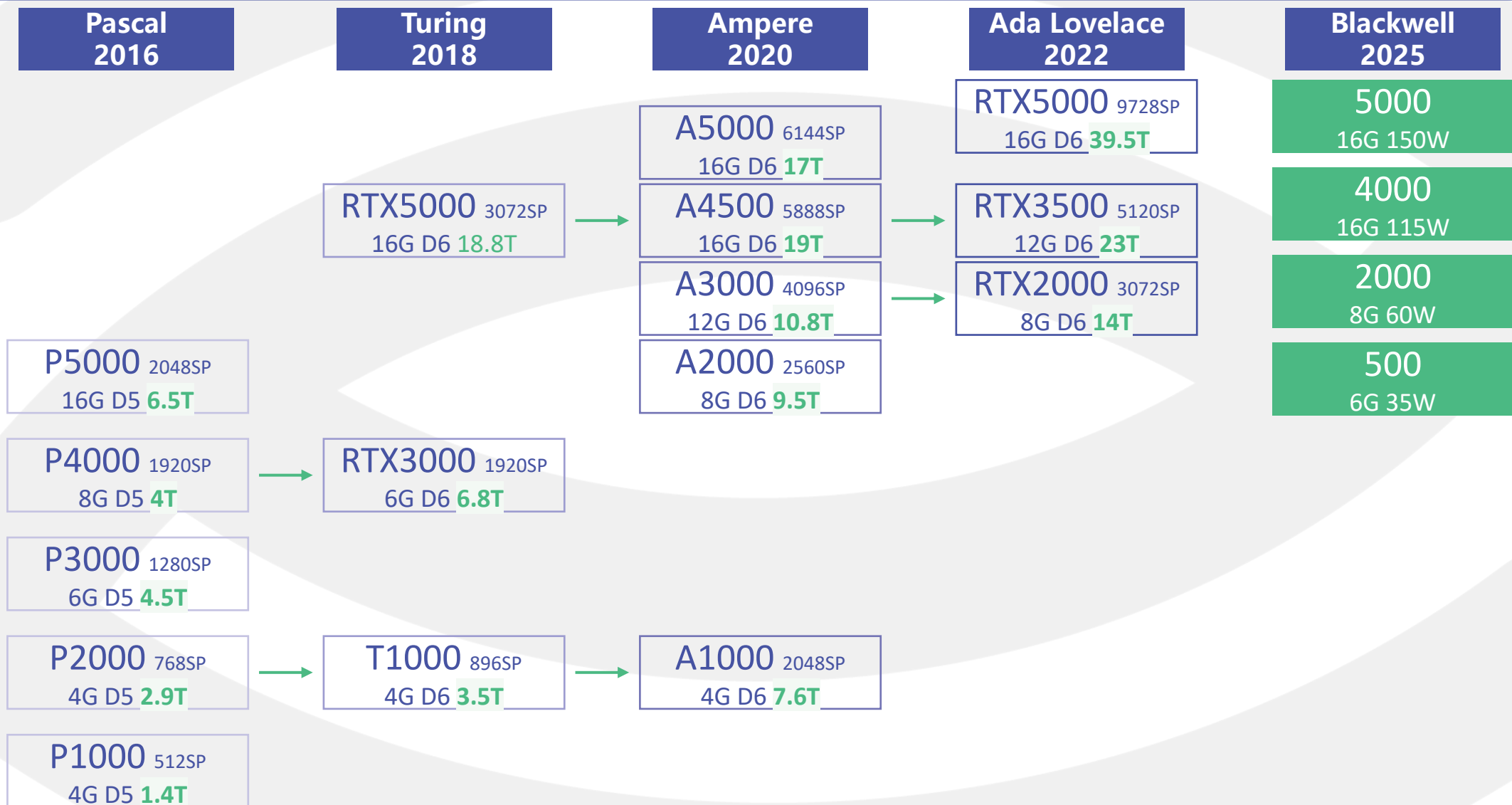
- Intel 12th Alder Lake-N N97
- 16G LPDDR5
- 1*SATA3.0
- 64G EMMC
- 1*PCIe 3.0 4x
- 2*DDI
- 1*eDP/LVDS
- 1*8bit GPIO
- 2*LAN
- 2*USB3.0
- 6*USB2.0
- 82*50*1.2mm

PART.

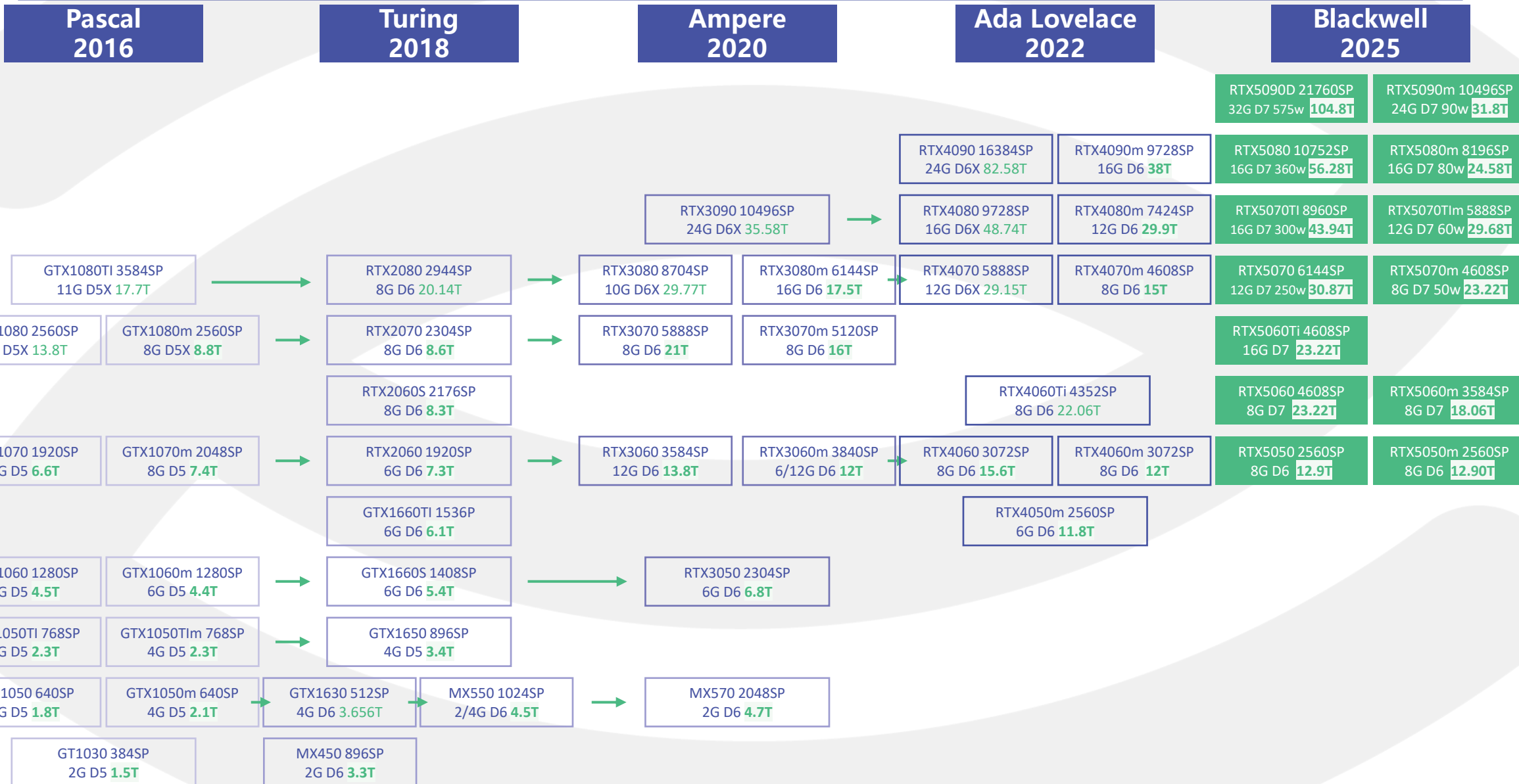
4

MXM Series

Chipset Upgrade-Quadro



Chipset Upgrade-GeForce



Ada Lovelace

Ampere

Turing

Pascal

256bit

16G
8G

NEW

MMR5000B6-16G V2
RTX5000m 9728SP
16G GDDR6 256bit
60/80/115W **39.5T**
MXM3.1 Type B

MMA5000A6-16G
A5000m 6144SP
16G GDDR6 256bit
110W **17T**
MXM3.1 Type B

MMA4500A6-16G
A4500m 5888SP
16G GDDR6 256bit
80/130W **19T**
MXM3.1 Type B

MMP500B5-16G
P5000m 2048SP
16G GDDR5 256bit
97/112W **6.5T**
MXM3.1 Type B

MMP4000B5-8G
P4000m 1920SP
8G GDDR5 256bit
45/92W **4T**
MXM3.1 Type B

192bit

12G
6G

NEW

MMR3500B6-12G V2
RTX3500m 5120SP
12G GDDR6 192bit
115W **23.8T**
MXM3.1 Type B

MMA3000A6-12G
A3000m 4096SP
12G GDDR6 192bit
85W **10.8T**
MXM3.1 Type B

MMR3000B6-6G
RTX3000m 1920SP
6G GDDR6 192bit
82W **6.8T**
MXM3.1 Type B

MMP3000B5-6G
P3000m 1280SP
6G GDDR5 192bit
87W **4.5T**
MXM3.1 Type B

128bit

8G
4G

MMR2000A6-8G
RTX2000m 3072SP
8G GDDR6 128bit
56.5W **14T**
MXM3.1 Type A

MMA2000B6-8G
A2000m 2560SP
8G GDDR6 128bit
38/60/80W **9.5T**
MXM3.1 Type B

MMA2000A6-8G
A2000m 2560SP
8G GDDR6 128bit
55W **8.9T**
MXM3.1 Type A

MMA1000A6-4G
A1000m 2048SP
8G GDDR6 128bit
36/58.8W **7.6T**
MXM3.1 Type A

MMT1000A6-4G
T1000m 896SP
4G GDDR6 128bit
36/50W **3.5T**
MXM3.1 Type A

MMP2000A5-4G
P2000m 768SP
4G GDDR5 128bit
75W **2.9T**
MXM3.1 Type A

MMP1000A5-4G
P1000m 512SP
4G GDDR5 128bit
35/58W **1.4T**
MXM3.1 Type A

40 Series

30 Series

20 Series

256bit 16G	MM4090B6-16G RTX4090m 9728SP 16G GDDR6 256bit 100/130/150W 38T MXM3.1 Type B B	MM3080TIB6-16G RTX3080Tim 7424SP 16G GDDR6 256bit 110/160W 20T MXM3.1 Type B B	MM3080B6-16G RTX3080m 6144SP 16G GDDR6 256bit 110W/135W 17.5T MXM3.1 Type B B	
	256bit 8G	MM3070TIB6-8G RTX3070Tim 5888SP 8G GDDR6 256bit 80/113/138W 17T MXM3.1 Type B B	MM3070B6-8G RTX3070m 5120SP 8G GDDR6 256bit 70/105/126W 16T MXM3.1 Type B B	MD2070B6-8G RTX2070 2304SP 8G GDDR6 256bit 220W 8.6T MXM3.1 Type B B
192bit 12G 6G		MM4080B6-12G RTX4080m 7424SP 12G GDDR6 192bit 80/125W 30T MXM3.1 Type B B	MD3060B6-12G RTX3060 3584SP 12G GDDR6 192bit 90/120W 13.8T MXM3.1 Type B B	MM3060B6-6/12G RTX3060m 3840SP 6/12G GDDR6 192bit 75/100W 12T MXM3.1 Type B B
	128bit 96bit 8G	MM4070A6-8G RTX4070m 4608SP 8G GDDR6 128bit 65W 15T MXM3.1 Type A A	MD4060A6-8G RTX4060 3072SP 8G GDDR6 128bit 115W 15.6T MXM3.1 Type A A	MD3050B6-8G RTX3050 2560SP 8G GDDR6 128bit 92.5W 10T MXM3.1 Type B B
		MM4060A6-8G RTX4060m 3072SP 8G GDDR6 128bit 60W 12T MXM3.1 Type A A	MM4050A6-6G RTX4050m 2560SP 6G GDDR6 96bit 35/65W 11.8T MXM3.1 Type A A	MD2060B6-6G V2 RTX2060 1920SP 6G GDDR6 192bit 100/158W 7.3T MXM3.1 Type B B

16 Series

10 Series

9/7 Series

<p>256bit</p> <p>8G</p>			<p>MM1080B5X-8G GTX1080m 2560SP 8G GDDR5X 256bit 100/130W 8.8T MXM3.1 Type B B</p>	<p>MM1070B5-8G V2 GTX1070m 2048SP 8G GDDR5 256bit 60/85/130W 7.4T MXM3.1 Type B B</p>		
<p>192bit</p> <p>6G</p>	<p>MM1660TIB6-6G GTX1660Tim 1536SP 6G GDDR6 192bit 90W 5.8T MXM3.1 Type B B</p>	<p>MD1660SB6-6G GTX1660 Super 1408SP 6G GDDR6 192bit 50/66/95W 5.4T MXM3.1 Type B B</p>	<p>MM1060B5-6G GTX1060m 1280SP 6G GDDR5 192bit 37/90W 4.4T MXM3.1 Type B B</p>	<p>MD1060B5-6G GTX1060 1280SP 8G GDDR5 192bit 60/95W 4.5T MXM3.1 Type B B</p>		
<p>128bit</p> <p>4G</p> <p>2G</p>	<p>MMX550A6-4G MX550 1024SP 4G GDDR6 64bit 35W 4.5T MXM3.1 Type A A</p>	<p>MMX550A6-2G MX550 1024SP 2G GDDR6 64bit 35W 4.5T MXM3.1 Type A A</p>	<p>MM1050TIA5-4G GTX1050Tim 768SP 4G GDDR5 128bit 30/40/52/67W 2.3T MXM3.1 Type A A</p>	<p>MD1050TIA5-4G GTX1050Ti 768SP 4G GDDR5 128bit 32.4/54/76W 2.3T MXM3.1 Type A A</p>	<p>MM960A5-2G V2 GTX960m 640SP 2G GDDR5 128bit 67W MXM3.1 Type A A</p>	<p>MM950A5-2G V2 GTX950m 640SP 2G GDDR5 128bit 70W MXM3.1 Type A A</p>
<p>64bit</p> <p>2G</p>			<p>MD1030A5-2G GT1030 384SP 2G GDDR5 64bit 15/32/45W 1.5T MXM3.1 Type A A</p>	<p>MD730A3-2G GT730 192SP 2G DDR3 64bit 25.78W MXM3.1 Type A A</p>	<p>MM730A3-2G GT730m 96SP 2G DDR3 128bit 33W MXM3.1 Type A A</p>	

Embedded Series

RX500 Series

HD Series

256bit

8G

E9390
E9390 1792SP
8G GDDR5 256bit
62.5W
MXM3.1 Type B **B**

MD590B5-8G
RX590 2304SP
8G GDDR5 256bit
98/130W
MXM3.1 Type B **B**

MD580B5-8G
RX580 2048SP
8G GDDR5 256bit
120/140W
MXM3.1 Type B **B**

MD570B5-8G
RX570 2048SP
8G GDDR5 256bit
130W
MXM3.1 Type B **B**

128bit

8G

4G

E9260
E9260 896SP
4G GDDR5 128bit
50W
MXM3.1 Type A **A**

E9174
E9174 512SP
4G GDDR5 128bit
50W
MXM3.1 Type A **A**

MD560A5-4G
RX560 896SP
4G GDDR5 128bit
60/80W
MXM3.1 Type A **A**

MD550A5-4G
RX550 640SP
4G GDDR5 128bit
19/25/35W
MXM3.1 Type A **A**

MD7750A5-4G
HD7750 512SP
4G GDDR5 128bit
47W
MXM3.1 Type A **A**

64bit

4G

2G/1G

MD5230A3-1G
R5 230 160SP
1G DDR3 64bit
25W
MXM3.1 Type A **A**

MD520A3-1G/2G
R520 384SP
1G/2G DDR3 64bit
25.6W
MXM3.1 Type A **A**

MD520A3-1G/2G
R520 384SP
1G/2G DDR3 64bit
25.6W
MXM3.1 Type A **A**

PART.

5

PCIe Series

NVIDIA Quadro Series

NVIDIA Geforce Series

AMD Series

352bit
320bit

11G
10G

GTX1080Ti 11GD5X 3PH

GTX1080Ti 3584SP
11GB GDDR5X 352bit 250W
3DP1.4+HDMI2.0 PCIe 16x 3.0
ATX 2Slot

D5X

256bit

16G
8G

RTX5000m 16GD6 4P

2025 Aug

RTX5000m 9728SP
16GB GDDR6 256bit 115W
4DP1.4 PCIe 16x 4.0
ATX 1Slot

D6

A5000m 16GD6 3PH

2025 Jul

A5000m 6144SP
16GB GDDR6 256bit 110W
3DP1.4+HDMI2.1 PCIe 16x 4.0
ATX 1Slot

D6

RTX4090m 16GD6 3PH

RTX4090m 9728SP
16GB GDDR6 256bit 240W
3DP1.4+HDMI2.1 PCIe 16x 4.0
ATX 2Slot

D6

RX6800XT 12GD6 3PH

RX6800XT 4608SP
12GB GDDR6 256bit 300W
3DP1.4+HDMI2.1 PCIe 16x
ATX 2Slot

D6

NVIDIA Series

AMD Series

192bit

6G

P3000m 6GD5 4P

TBD

P3000m 1280SP
6G GDDR5 192bit 87W
4DP PCIe 16x
ITX 1Slot

D5

**RTX3060 12GD6 3PH
ITX**

RTX3060 3584SP
12G GDDR6 192bit 120W
3DP+HDMI PCIe 16x
ITX 2Slot

D6

**GTX1660S 6GD6
4P**

GTX1660S 1408SP
6G GDDR6 192bit 125W
4DP PCIe 16x
ITX 2Slot

D6

128bit

4G
2G**GTX1050Ti 4GD5 PHD**

GTX1050Ti 768SP
4G GDDR5 128bit 75W
DP+HDMI+DVI PCIe 16x
ITX 2Slot

D5

GTX1050 2GD5 PHD

GTX1050 768SP
2G GDDR5 128bit 75W
DP+HDMI+DVI PCIe 16x
ITX 2Slot

D5

GTX750Ti 2GD5 PHD

GTX750Ti 640SP
2G GDDR5 128bit 60W
DP+HDMI+DVI PCIe 16x
ITX 2Slot

D5

RX550 2/4GD5 PHD

RX550 512SP
2/4G GDDR5 128bit 50W
DP+HDMI+DVI PCIe 16x
ITX 2Slot

D5

64bit

2G

GT730 2GD5 VPD

GT730 384SP
2G GDDR5 64bit 49W
VGA+HDMI+DVI PCIe 16x
ITX 2Slot

D5

GT730 2GD3 PHD

GT730 384SP
2G GDDR3 64bit 35W
DP+HDMI+**DL-DVI** PCIe 16x
ITX 1Slot

D3

GT730 2GD3 VHD

GT730 192SP
2G DDR3 64bit 49W
VGA+HDMI+DVI PCIe 16x
ITX 2Slot

D3

NVIDIA Series

AMD Series

128bit

8G

**RTX4070m
8GD6 PH**

2025 May

RTX4070m 4608SP
8G GDDR6 128bit
DP+HDMI PCIe 16x
SFF 1Slot
D6

**RTX4060m
8GD6 PH**

2025 May

RTX4060m 3072SP
8G GDDR6 128bit
DP+HDMI PCIe 16x
SFF 1Slot
D6

**RTX4060 8GD6
PH**

RTX4060 3072SP
8G GDDR6 128bit 70W
DP+HDMI PCIe 16x
SFF 1Slot
D6

96bit

6G

RTX4050m 6GD6 PH

2025 May

RTX4050m 2560SP
6G GDDR6 96bit
DP+HDMI PCIe 16x
SFF 1Slot
D6

RTX3050 6GD6 PH

RTX3050 2304SP
6G GDDR6 96bit 65W
DP+HDMI PCIe 16x
SFF 1Slot
D6

128bit

4G

T1000m 4GD6 4mDP

T1000m 896SP
4G GDDR6 128bit 75W
4mDP PCIe 16x
SFF 1Slot
D6

P1000m 4GD5 4mDP

2025 Apr
P1000m 512SP
4G GDDR5 128bit 58W
4mDP PCIe 16x
SFF 1Slot
D5

**GTX1650 4GD5
VHP**

GTX1650 896SP
4G GDDR5 128bit 75W
VGA+HDMI+DP PCIe 16x
SFF 1Slot
D5

**GTX1050Ti/1050
4/2GD5 PHD**

GTX1050Ti/1050 768SP
4/2G GDDR5 128bit 75W
DP+HDMI+DVI PCIe 16x
SFF 2Slot
D5

RX560 4GD5 VHP

RX560 896SP
4G GDDR5 128bit 80W
VGA+HDMI+DP PCIe 16x
SFF 1Slot
D5

RX550 4GD5 VHP

RX550 640SP
4G GDDR5 128bit 50W
VGA+HDMI+DP PCIe 16x
SFF 1Slot
D5

128bit

64bit

2G

1G

**GTX750Ti 2GD5
VPH**

GTX750Ti 640SP
2G GDDR5 128bit 60W
VGA+DP+HDMI PCIe 16x
SFF 1Slot
D5

**GT1030 2GD5
HD**

GT1030 384SP
2G GDDR5 64bit 30W
HDMI/DP+DVI PCIe 16x
SFF 1Slot
D5

**GT1010 2GD5
2H**

GT1010 256SP
2G GDDR5 64bit 27.5W
2HDMI PCIe 16x
SFF 1Slot
D5

R5 230 1GD3 VPD

R5 230 160SP
1G DDR3 64bit 19W
VGA+DP+DVI PCIe 16x
SFF 1Slot
D3

PCIe 8x Series

PCIe 1x Series

PCI Series

64bit

2G

GT730 2GD3 V2H 8X

GT730 384SP
1G DDR3 64bit 49W
VGA+2HDMI PCIe 8x
SFF 1Slot

8X

64bit

1G

R5 230 1GD3 V2H 8X

R5 230 160SP
1G DDR3 64bit 19W
VGA+2HDMI PCIe 8x
SFF 1Slot

8X

G210 1GD3 VHD 1X

G210 16SP
1G DDR3 64bit 30W
VGA+HDMI+DVI PCIe 1x
SFF 1Slot

1X

G610 1GD3 VHD PCI

G610 48SP
1G DDR3 64bit 29W
VGA+HDMI+DVI PCI
SFF 1Slot

PCI

64bit

512MB

**HD5450 512D3 P2D
PCI**

HD5450 80SP
512MB DDR3 64bit 19W
DP+2DVI PCI
SFF 1Slot

PCI

Multi Display Series



2Port Series

3Port Series

4Port Series

5Port Series

6Port Series

**256bit
192bit**

**8G
6G**

				GTX1660S 6GD6 4P GTX1660 Super 1408SP 6GB GDDR6 192bit 125W 4DP1.4 PCIe 16x ATX 2Slot D6		RX580 8GD5 6H RX580 2304SP 8GB GDDR5 256bit 150W 6HDMI2.0 PCIe 16x ATX 2Slot D5
--	--	--	--	--	--	---

128bit

4G

	T1000m 4GD6 4mDP T1000m 896SP 4G GDDR6 128bit 75W 4mDP PCIe 16x SFF 1Slot D6	P1000m 4GD5 4mDP 2025 Apr P1000m 512SP 4G GDDR5 128bit 58W 4mDP PCIe 16x SFF 1Slot D5	RX550 4GD5 4P/4H RX550 640SP 4GB GDDR5 128bit 50W 4DP1.4/HDMI2.0 PCIe 16x SFF 2Slot D5	R7 350 4GD5 6H R7 350 512SP 4GB GDDR5 128bit 55W 6HDMI1.4 PCIe 16x ATX 2Slot D5
	P3000m 4GD5 4P TBD P3000m 1280SP 4G GDR5 128bit 87W 4DP PCIe 16x ITX 1Slot D5	GTX1050Ti 4GD5 4P/4H GTX1050Ti 768SP 4GB GDDR5 128bit 75W 4DP1.4/HDMI2.0 PCIe 16x ATX 1Slot D5	RX550 4GD5 4mDP RX550 640SP 4GB GDDR5 128bit 50W 4mDP1.4 PCIe 16x SFF 1Slot D5	HD7750 4GD5 6mDP HD7750 512SP 4GB GDDR5 128bit 55W 6mDP1.2 PCIe 16x ATX 1Slot D5

64bit

2G

GT730 2GD3 V2H 8X GT730 384SP 2G DDR3 64bit 49W VGA+2HDMI PCIe 8x SFF 1Slot D3		HD6570 2GD3 4mDP HD6570 480SP 2GB DDR3 128bit 44W 4mDP1.1 PCIe 16x SFF 1Slot D3	GT730 4GD3 4H GT730 384SP 4GB DDR3 64bit 49W 4HDMI1.4 PCIe 16x ATX 1Slot D3
GT1010 2GD5 2H GT1010i 256SP 2GB GDDR5 64bit 27.5W 2HDMI2.0 PCIe 16x SFF 1Slot D5			

64bit

**1G
512MB**

HD5450 1GD3 2VP HD5450 80SP 1G DDR3 64bit 19W 2VGA+DP PCIe 16x SFF 1Slot D3	HD5450 1GD3 3HDMI/DVI HD5450 80SP 1G DDR3 64bit 19W 3DVI/HDMI PCIe 16x SFF 1Slot D3	HD5450 512D3 2DP HD5450 80SP 512MB DDR3 64bit 19W DP+2DL-DVI PCIe 16x SFF 1Slot D3	HD6570 1GD3 4VGA HD6570 480SP 1GB DDR3 128bit 44W 4VGA PCIe 16x SFF 1Slot D3	HD6570 1GD3 mDP+4DVI/HDMI HD6570 480SP 1GB DDR3 128bit 44W mDP+4DVI/HDMI PCIe 16x SFF 1Slot D3
R5 230 1GD3 V2H 8X R5 230 160SP 1G DDR3 64bit 19W VGA+2HDMI PCIe 8x SFF 1Slot D3	HD5450 1GD3 3VGA HD5450 80SP 1G DDR3 64bit 19W 3VGA PCIe 16x SFF 1Slot D3	HD5450 512D3 P2D PCI HD5450 80SP 512MB DDR3 64bit 19W 2DVI+DP 1.1 PCI SFF 1Slot D3		

PART.

6

Intel Series

Chipset	B580	B570
Memory	12GB GDDR6 192bit	10GB GDDR6 160bit
Chip Clock	2670MHz	2500MHz
Memory Clock	19Gbps	19Gbps
Memory Bandwidth	456GB/s	380GB/s
TDP	190W	150W
INT8	233TOPS	203TOPS



<i>A380 6GD6 4H</i>	<i>A380 6GD6 2H</i>	<i>A310 4GD6 4H</i>	<i>A310 6GD6 2H</i>
Intel Arc A380	Intel Arc A380	Intel Arc A310	Intel Arc A310
128SP	128SP	96SP	96SP
6G 96bit GDDR6	6G 96bit GDDR6	4G 96bit GDDR6	4G 96bit GDDR6
4*HDMI2.0	2*HDMI2.0	4*HDMI2.0	2*HDMI2.0
SFF/2 Slot(165*70*37mm)	SFF/1 Slot(165*70*22mm)	SFF/2 Slot(165*70*37mm)	SFF/1 Slot(165*70*22mm)
PCIe 16x 4.0(By 8x)	PCIe 16x 4.0(By 8x)	PCIe 16x 4.0(By 8x)	PCIe 16x 4.0(By 8x)
45W	45W	35W	35W

PART.

7

China Chipset Series

EMA-7H41

2025 Jul

- Hygon 3450
- 96G DDR5
- 4*SATA3.0
- 2*M.2
- 1*PCIe 5.0 16x
- 1*VGA
- 1*HDMI
- 1*LVDS
- 1*4bit GPIO
- 4*RJ45
- 4*USB3.0
- 6*USB2.0
- 2*RS232/422/485
- mITX(170*170mm)

2025 Q2

2025 Q3

2025 Q4

GB2062

GB2062(C0)
8G LPDDR4 128bit HDMI+VGA 10W
SFF/1Slot PCIe4.0 8x

GB2062(C20)
4/8G LPDDR4 128bit HDMI+VGA 25W
SFF/1Slot PCIe4.0 8x

GB2040

GB2040(C46) 2025 May
4/8/16G LPDDR4 128bit 4/6*HDMI
ATX/2Slot PCIe3.0 16x

GB2040(C42)
4/8/16G LPDDR4 64/128bit 2/4*HDMI 18W
SFF/2Slot PCIe3.0 16x

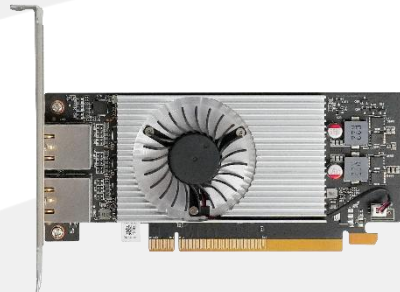
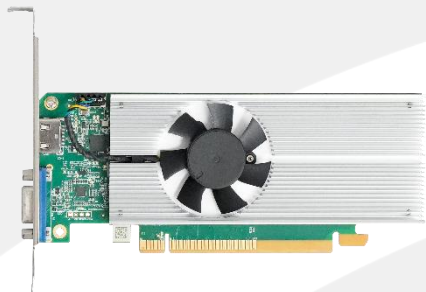
GB2040(C21)
4/8G LPDDR4 64/128bit HDMI+VGA 18W
SFF/1Slot PCIe3.0 16x

GB2040(C44) TBD
DP+DVI
SFF/1Slot PCIe3.0 16x

GB2040(M60)
2/4/8G LPDDR4 64bit 15W
Type A **MXM3.0**

GB2040(M66) 2025 Jun
4/8/16G LPDDR4 128bit 18W
Type A **MXM3.0**

GB2040(M62) 2025 Jun
2/4/8G LPDDR4 64bit 15W
Type A **MXM3.0**



GB2062 8GD4 HV SFF	GB2040 8GD4 4H SFF	GB2040 4GD4 HV SFF	MD2040A4-4G
GB2062	GB2040	GB2040	GB2040
8G 128bit LPDDR4	4/8/16G 128bit LPDDR4	4/8G 64bit LPDDR4	2/4/8G 64bit LPDDR4
HDMI2.0+VGA	2/4*HDMI2.0	HDMI2.0+VGA	eDP+DP+HDMI+DP+VGA
SFF/1Slot (167.9*68.9*15.6mm)	SFF/2Slot (155*69*36mm)	SFF/1Slot (154*69*18mm)	Type A (70*82mm)
PCIe 16x 4.0(By x8)	PCIe 16x 3.0(By x8)	PCIe 16x 3.0(By x8)	MXM3.0(by 3.0 x8)
15W	18W	15W	15W
数字孪生和虚拟引擎开发	4HDMI多屏	信创	商业级和泛工业级

PART.

8

AI AIO Series

Specification



COMING SOON

COMING SOON

Model No.	MSC-2401	MSC-2701	MSC-3201
Display+TP	23.8" optical bonding display -optional for 4K/1080P, medical grade/commercial grade -optional for touchable(AR+AG+AF)/non touchable panel -optional for built-in/non built-in Dicom/Gamma curve	27" optical bonding display -optional for 4K/1080P, medical grade/commercial grade -optional for touchable(AR+AG+AF)/non touchable panel -optional for built-in/non built-in Dicom/Gamma curve	32" 4K optical bonding display -optional for touchable(AR+AG+AF)/non touchable panel -optional for built-in/non built-in Dicom/Gamma curve
CPU	12th Gen. Alder Lake-H CPU, Core i5-12450H/i7-12700H/i9-12900H 13th Gen. Raptor Lake-H CPU, Corei5-13500H/i7-13700H/i9-13900H		
MXM module	Optional for MXM 3.1 30/40 series GPU (i.e RTX3080m 16G, RTX3060m 6/12G, etc)		
RAM	2*SO-DIMM, DDR5, 64G 4800MHz		
Expansion Slots	1*M.2 Key-M(2242/2280) for PCIe x4 1*M.2 Key-B (3042 /3052) for 4G/5G(1*SIM) 1*M.2 Key-E(2230) for WIFI 1*M.2 Key-M(2242/2280) for PCIeX4 SDI /HDMI Capture Card		
Storage	1*SATA3.0 (7P+15Pins) drawer installing		
Display	1*HDMI(From CPU)		
USB	2*USB3.0, 2*USB2.0, 2*USB3.0(optional for aviation plug)	4*USB3.0、3*USB2.0	2*USB3.0、2*USB2.0、2*USB3.0(optional for aviation plug)
Audio	ALC897, 1*Line Out、1*MIC In		
Ethernet	2*RJ45 10/100/1000M		
2D	2D scanner (optional) (Model: Newland EM3296 or Honeywell N3680)		
Dimension	566(L)*375.5+95(W)*240(D)mm	566(L)*375.5+95(W)*240(D)mm	566(L)*375.5+95(W)*240(D)mm
Mounting	optional for VESA desktop base, VESA bracket, ARM bracket		
Certification	B9706.1, GB9706.102		

PART.

9

AI Series

NVIDIA Jetson Series
MIN-EC07B

- Orin Nano/NX
- 1*M.2
- 2*RJ45
- 1*RS485
- 1*RS232
- 1*HDMI
- 1*SIM
- 4*USB3.0
- 1*Type C
- 1*CAN
- 224*130.5*65.5mm

MIN-EC07C

- Orin Nano/NX
- 3*M.2
- 2*RJ45
- 1*UART
- 1*DP
- 4*USB3.2
- 1*Type C
- 1*CAN
- 1*SPI Bus
- 126*107*39.5mm

MIN-EC07

- Xavier NX & TX2 NX & NANO
- 8/16G LPDDR4
- 3*M.2
- 1*SATA3.0
- 2*RJ45
- 1*RS232/RS422/RS485
- 1*DP
- 1*HDMI
- 1*SIM
- 2*MIPI CSI Camera
- 203*131.5*65.5mm

HLC-6001

- Xavier NX & TX2 NX & NANO
- 8/16G LPDDR4
- 3*M.2
- 1*SATA3.0
- 2*RJ45
- 1*RS232/RS422/RS485
- 1*DP
- 1*HDMI
- 1*SIM
- 2*MIPI CSI Camera
- 482.6*258*43.6mm

Hailo
MIN-EC01(Hailo)

- Intel Skylake / Kaby Lake I3/I5/I7
- 32G DDR4
- 2*M.2
- 1*SATA3.0
- 2*RJ45
- 1*RS485
- 1*HDMI
- 1*Micro SD
- **4*Hailo-8**
- 170*196*42mm

Rockchip
MIN-RK03

- Rockchip RK3588
- 32G LDDR4
- 1*Mini PCIe
- 1*SIM
- 2*USB2.0+2*USB3.0
- 2*RJ45
- 4*RS232
- 2*RS485
- 1*HDMI In+1*HDMI Out
- 190*126*32mm

FLS-C302-A00

- Rockchip RK3399
- 2*RK1808
- Max 4G DDR4
- 1*Mini PCIe
- 1*SIM
- 1*TF Card
- 2*RJ45
- 159.7*99.8*39mm



<i>MIN-EC07C</i>	<i>MIN-EC07B</i>	<i>MIN-EC07</i>	<i>HLC-6001</i>	<i>Min-EC01</i>	<i>MIN-RK03</i>
NVIDIA Jetson Orin NANO & NX	NVIDIA Jetson Orin NANO & NX	NVIDIA Jetson Xavier NX & TX2 NX & NANO	NVIDIA Jetson Xavier NX & TX2 NX & NANO	Intel Skylake / Kaby Lake	Rockchip RK3588
				PCH B250	Mali-G610
4G/8G/16G	4G/8G/16G	4G/8G/16G LPDDR4	4G/8G/16G LPDDR4	Max 32G DDR4	32G LDDR4
3*M.2	1*M.2	1*Mini PCIe 3*M.2	1*Mini PCIe 3*M.2	4*Mini PCIe 2*M.2	1*Mini PCIe
N/A	1*SIM	1*SIM 1*TF Card	1*SIM 1*TF Card	1*SATA 1*Micro SD	1*SIM
1*DP	1*HDMI	1*HDMI 1*DP	1*HDMI 1*DP	1*HDMI	1*HDMI In 1*HDMI Out
2*RJ45	2*RJ45	2*RJ45	2*RJ45	2*RJ45	2*RJ45
4*USB3.2 1*Type C	4*USB3.0	1*USB3.0 1*USB OTG 2*USB2.0	1*USB3.0 1*USB OTG 1*USB2.0	6*USB3.0	2*USB2.0 1*USB3.0 1*USB3.0 OTG
2*UART 1*CAN	1*RS485 1*RS232 1*CAN	2*GPIO 1*CAN	2*GPIO	1*RS485	4*RS232 2*RS485
126*107*39.5mm	224*130*65.5mm	203*131.5*65.5mm	482.6*258*43.6mm	170*196*42mm	190*126*32mm

High Performance CPU

Rockchip RK3588 CPU, applying 8nm technology.

6T harshrate NPU

8 Core CPU (4Core A76 + 4 Core A55) + ARM high performance GPU

High Vision Processing

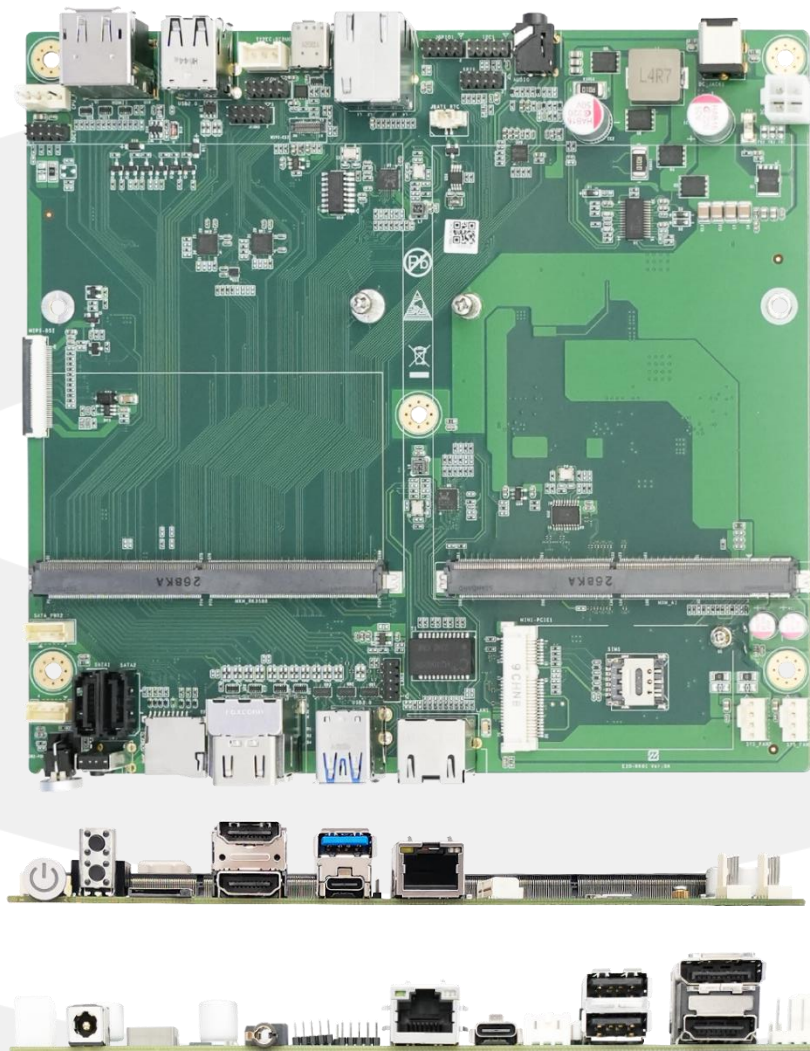
Support structured light, TOF fast face unlock

Full Functional Ports

Up to 8K display processing ability

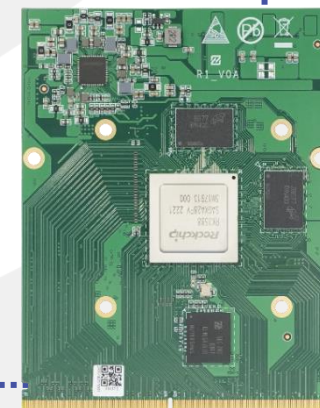
Nice Scalability

PCIe3.0, SATA3.0, Type C/USB3.0 high speed port, available for expansion for AI and image processing.



RK3588 MXM Core Board

- Model No.: R1
- RK3588
- 8G LPDDR4
- 3 x HDMI + 1 x DP
- 1 x TF Card + 1 x SIM Card
- 2 x SATA3.0
- 1 x Mini PCIe for 4G/5G
- 1 x USB3.0
- 2 x USB2.0
- 1 x Type C
- 2 x LAN
- 1 x SPI
- 2 x COM
- 1 x I2C
- 1 x GPIO
- 1 x CAN
- 190*180mm





CoB – 26 TOPS

NEW

MXM

52-104 TOPS



M.2

26 TOPS



Key M 4 lanes
Key B+M 2 lanes

Key A+E
2 lanes

mPCIe

13 TOPS



PCIe

SFF
52-104 TOPS



ATX
104-208 TOPS



NN Model	Input Resolution	FPS	Power (W)	FPS/W
Classification				
ResNet-50 v1	224×224	1357	3.7	364
MobileNet_v2_1.0	224×224	2434	2.1	1176
EfficientNet_M	240×240	890	4.0	221
ViT_base	224×224	138	2.6	52
Object Detection				
SSD_MobileNet_v1	300×300	1016	2.2	455
YOLOv5m	640×640	242	5.3	46
Semantic Segmentation				
stdc1	1024×1920	58	3.0	19

<https://hailo.ai/products/ai-accelerators/hailo-8-ai-accelerator/#hailo8-benchmarks>

* Notes:

1. Batch size is 8
2. Measurements were taken at room temperature through PCIe interface on Hailo-8 evaluation board
3. System host: Intel® Core™ i5-9400 CPU @ 2.90GHz; Models compiled with Hailo Dataflow Compiler version 3.28.0 (SW version 2024-07)

